

Color Legend

FLOORS

CARPET TILES (CPT)
CPT1
MFG: Mannington
REP: Steve Perkinson
COLLECTION: Good Form 2
PATTERN: TSN
NUMBER: 85113
COLOR: Chai Latte
BACKING: Manufacturers Standard
SIZE: 24" x 24"
INSTALLATION: Monolithic

VINYL COMPOSITION TILE (VCT)

VCT1
MFG: Armstrong
REP: Neal Mack
COLLECTION: Standard Excelon
PATTERN: Imperial Texture
COLOR: Fortress White #51839
SIZE: 12" x 12"
INSTALLATION: Monolithic

LUXURY VINYL TILE (LVT)

LVT1
MFG: Mannington
REP: Steve Perkinson
PATTERN: Amico - Stone
COLOR: Stria Crater #AR05MS45
SIZE: 12" x 12" x 2.5mm
INSTALLATION: Monolithic

PORCELAIN TILE (POR)

POR1
MFG: Daltile
REP: Christine Stull
PATTERN: Keystone
COLOR: Marble D325
SIZE: 2" x 2"
INSTALLATION: Align floor and base grout joints.
GROUT: Epoxy, color TBD

TRANSITION ACCESSORIES (TS)

TRANSITION STRIPS (TS)
TS1
MFG: Schluter System
STYLE: Schiene
FINISH: Stainless Steel
NOTE: Contractor to build up floor as required to ensure flush transition between materials

TS2
MFG: Johnsonite
REP: Barb Ludwig
STYLE: SLT-XX-C
COLOR: TBD
NOTE: Contractor to verify transition strip works with flooring material thickness

BASE

RUBBER BASE (RB)
RB1
MFG: Roppe
STYLE: Cove Base
COLOR: Black
SIZE: 4" x length of coil roll
INSTALLATION: Provide Rolled Goods

PORCELAIN TILE BASE (PORB)

PORB1
MFG: Daltile
REP: Christine Stull
PATTERN: Build-Up Base
NUMBER: MB-55
COLOR: Marble D325
SIZE: 4" base with bullnose edge
INSTALLATION: Install on walls scheduled to receive paint above, PT.
GROUT: Epoxy, color TBD by Architect.
NOTE: Floor and base grout joints are to align. Use manufacturers inside and outside corners.

PORB2

MFG: Daltile
REP: Christine Stull
PATTERN: Build-Up Base
NUMBER: MB-5A
COLOR: Marble D325
SIZE: 4" base with unfinished edge
INSTALLATION: Install on walls scheduled to receive tile above, PWT.
GROUT: Epoxy, color TBD by Architect.
NOTE: Floor and base grout joints are to align. Use manufacturers inside and outside corners.

WALLS

PAINT (PT)
PT1
MFG: Sherwin Williams
STYLE: ProMar 200 Zero VOC Interior Acrylic Latex
COLOR: Dover White SW6385
SHEEN: Eggshell, Unless otherwise noted

PT2

MFG: Sherwin Williams
STYLE: ProMar 200 Satin Alkyd Enamel
COLOR: Iron Ore SW7089
SHEEN: Eggshell, Unless otherwise noted

PT3

MFG: Sherwin Williams
STYLE: ProMar 200 Zero VOC Interior Acrylic Latex
COLOR: Loggia SW7506
SHEEN: Eggshell, Unless otherwise noted

PT4

MFG: Sherwin Williams
STYLE: ProMar 200 Zero VOC Interior Acrylic Latex
COLOR: Web Gray SW7075
SHEEN: Eggshell, Unless otherwise noted

PORCELAIN WALL TILE (PWT)

PWT1
MFG: Daltile
REP: Christine Stull
STYLE: Modern Dimensions
COLOR: Biscuit K175
FINISH: Matte
SIZE: 4-1/4" x 12-7/8"
INSTALLATION: Brick install
GROUT: Epoxy, color TBD

CORNER GUARDS (CG)

CG1
MFG: C/S Specialties Acrolyn
REP: Amy Baker
STYLE: Aluminum retainer with plastic cover
COLOR: (Match loggia color)
SIZE: 4" with 2" wing
INSTALLATION: Install from top of base to full height of guard, finish with end cap

CEILING

ACOUSTICAL CEILING TILE (ACT)
ACT1
MFG: USG
STYLE: Radar Clima-Plus High-NRC
SIZE: 24" x 24" x 3/4"
ITEM #: 22121
COLOR: White
GRID: 15/16" Down
GRID COLOR: White

CEILING PAINT (CP)

CP1
MFG: Match PT1
COLOR: Match PT1
SHEEN: Flat

MISCELLANEOUS

SOLID SURFACE (SS)
SS1
MFG: Corian
REP: Brian Maurer
COLOR: Whisper

General Remarks

(APPLICABLE THROUGHOUT ALL AREAS OF CONSTRUCTION)

- FOR ALL FLOORING MATERIALS INSTALLED ON GRADE OR BELOW GRADE, THE FLOORING CONTRACTOR SHALL BE RESPONSIBLE TO INCLUDE IN THEIR BID PRICES ALL REQUIRED MATERIALS AND LABOR FOR A COMPLETE INSTALLATION THAT MEETS THE MANUFACTURER'S TOTAL SYSTEM PERFORMANCE. THIS INCLUDES ALL PREP MATERIALS AND LABOR REQUIRED TO MEET MANUFACTURER'S WRITTEN SPECIFICATIONS FOR MOISTURE, PH, SMOOTHNESS OR LEVELNESS OR CLEANLINESS OF NEW OR EXISTING SUBSTRATES, ETC. THIS INSTALLATION SHALL INCLUDE THE MANUFACTURER'S SPECIFIED ADHESIVES, SEALERS, ETC.
- PAINT ALL HOLLOW METAL DOORS, WINDOW FRAMES, AND DOOR FRAMES PT2, ALYKD ENAMEL, EGGSHELL.
- GROUT TO BE EPOXY, COLOR BY ARCHITECT
- COLUMNS TO BE PAINTED TO MATCH ADJACENT WALL COLOR.
- ALL OUTSIDE DRYWALL CORNERS TO RECEIVE 4" HIGH IMPACT CORNER GUARDS (2" FLANGE) EQUAL TO ACRYLYN BLU-NOSE CORNERGUARDS.
- PATCH AND MATCH ALL FINISHES DUE TO CONSTRUCTION.
- SEE REFLECTED CEILING PLAN AND DETAILS FOR LOCATION AND HEIGHT OF CEILINGS.
- EVERY TRANSITION BETWEEN FLOORING MATERIALS TO BE FLUSH. IT IS FLOORING CONTRACTOR'S RESPONSIBILITY TO LEVEL SUBSTRATE AS NECESSARY FOR MATERIALS TO TRANSITION AT LEVEL HEIGHT, INCLUDING GRINDING OR BUILDING UP OF CONCRETE. ALL TRANSITION STRIPS TO BE STAINLESS STEEL EQUAL TO SCHLUTER SYSTEMS AND MUST MEET ADA. ALL PROFILES TO BE APPROVED BY ARCHITECT PRIOR TO INSTALLATION. TRANSITION STRIPS ARE UNNECESSARY BETWEEN LIKE MATERIALS (CARPET TO CARPET, LINOLEUM TO VINYL, ETC).
- PAINT VENTS, DIFFUSERS, ELECTRICAL PANELS, FIRE CABINETS (UNLESS THEY ARE NATURAL ALUMINUM OR STAINLESS STEEL), ETC. TO MATCH WALL COLOR.
- REWORK CEILING GRID AND TILE AS REQUIRED FOR NEW CONSTRUCTION.
- CONTRACTOR TO PROVIDE IU STANDARD SIGNAGE AS REQUIRED, PER SPECIFICATION SECTION 104000.

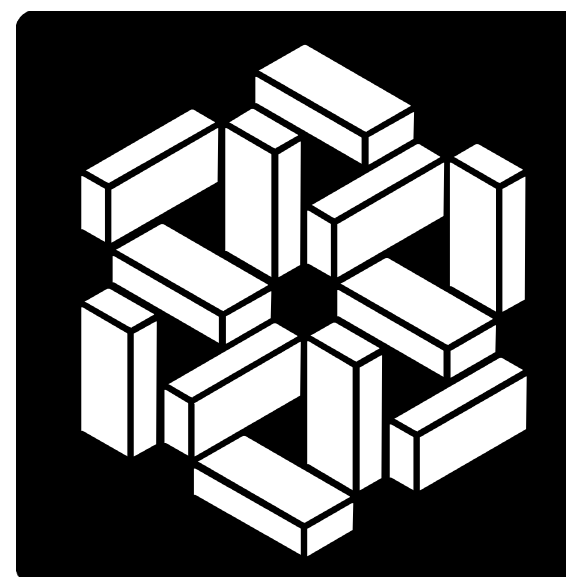
Specific Remarks

(SEE FINISH SCHEDULE FOR LOCATION)

- PAINT TO BE EPOXY.
- COUNTERTOP TO BE SS1, BACK AND SIDE SPLASH TO BE 4" H. APRON TO BE 5-1/2" H.
- EXISTING FLOORING TO REMAIN AS IS, OWNER IS RESPONSIBLE FOR STRIPPING AND REFINISHING.
- PAINT FACE, UNDERSIDE - BACKSIDE OF BULKHEADS CP1.

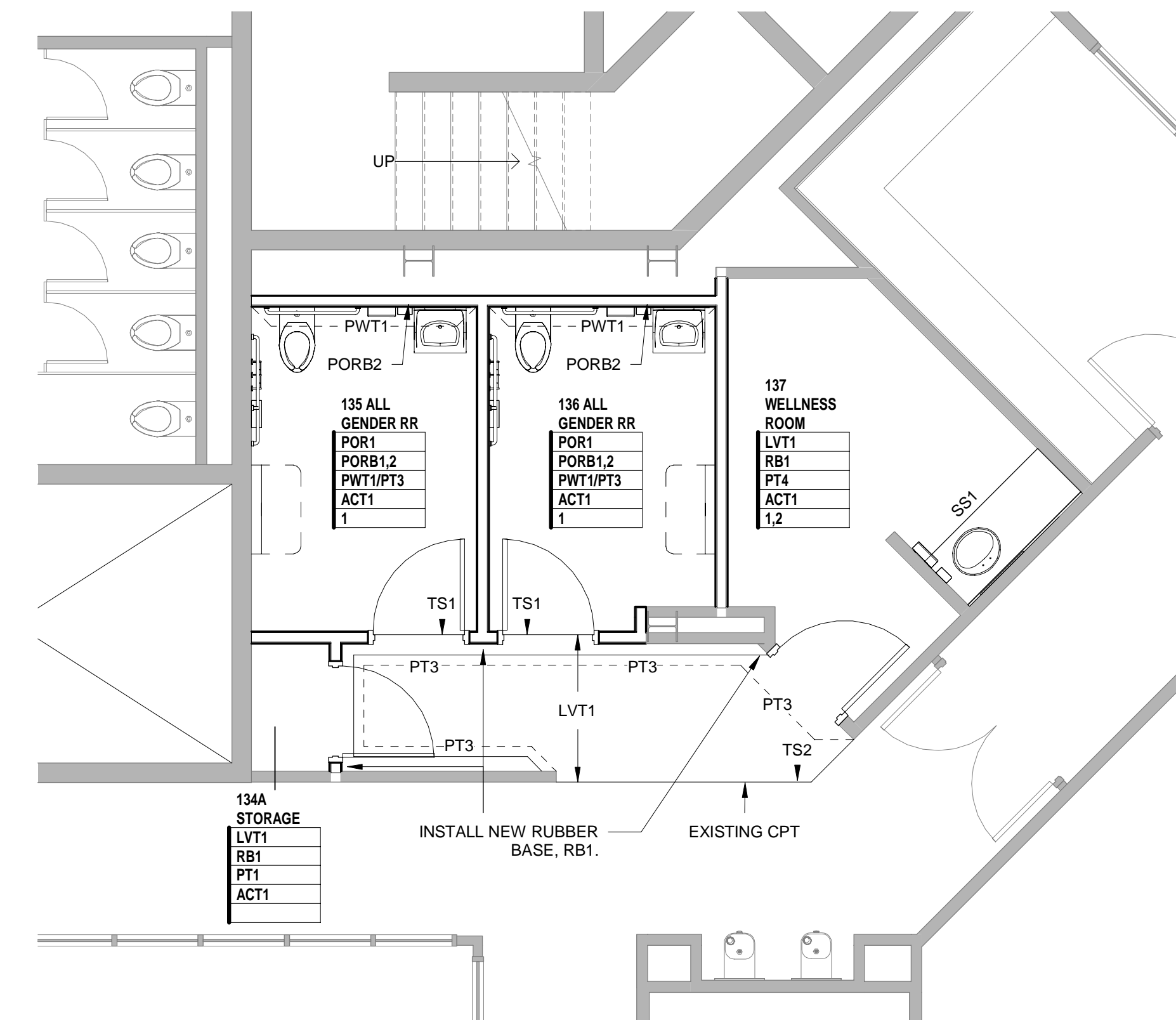
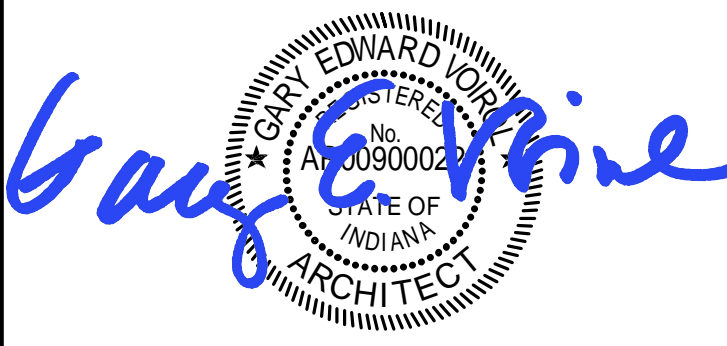
Room Finish Tag Legend

ROOM # AND NAME
FLOOR FINISH
BASE FINISH
WALL FINISH
CEILING FINISH
REMARKS

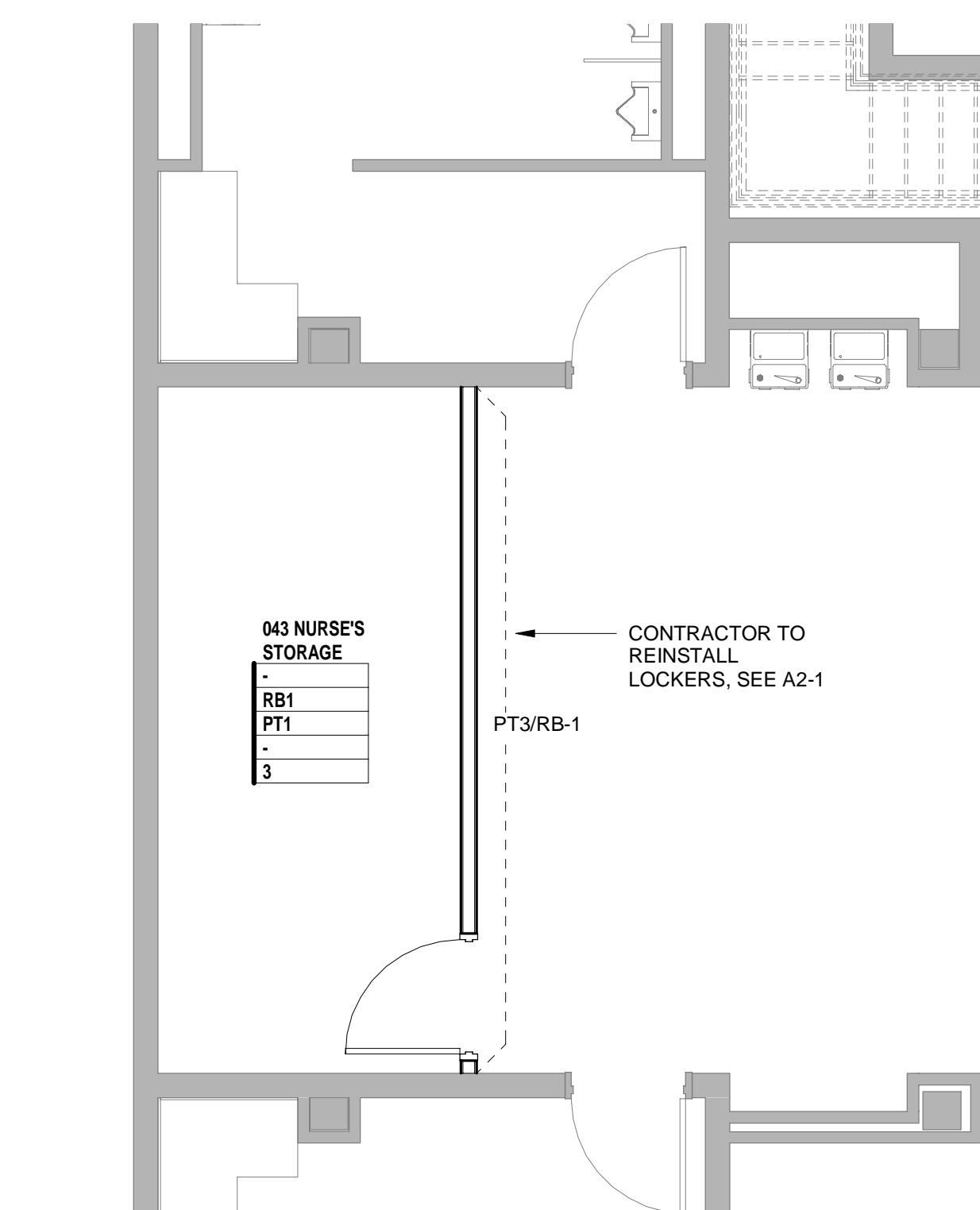


MSKTD & Associates
Architecture | Engineering | Interior Design

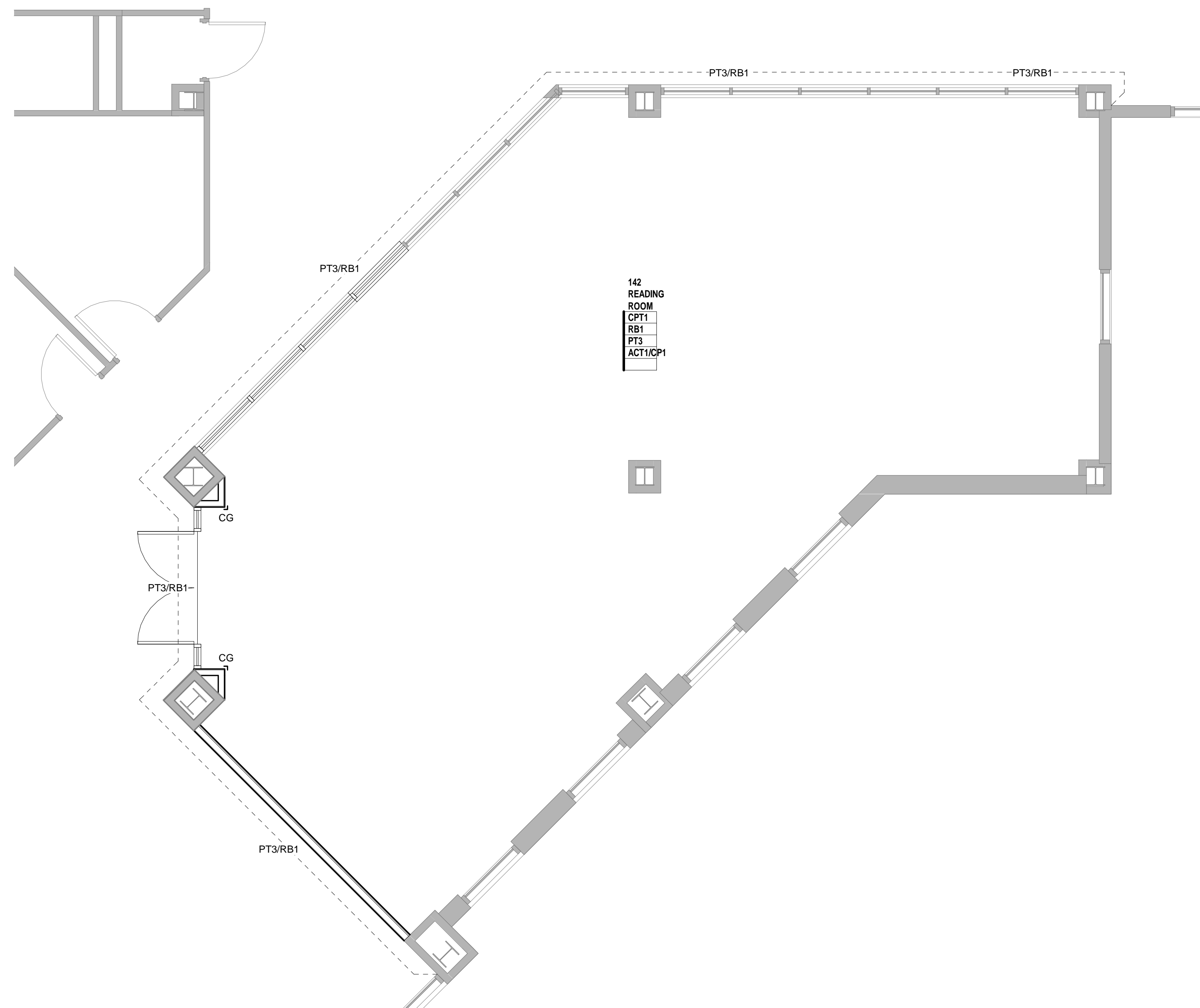
1715 Magnavox Way Fort Wayne, IN 46804 260.432.8537
930 North Meridian Indianapolis, IN 46204 317.917.1190
www.msktd.com



2 Wellness Area Finish Plan
1/4" = 1'-0"



1 Nurse Storage Finish Plan
1/4" = 1'-0"



3 Reading Room Finish Plan
1/4" = 1'-0"

A Project for:
Indiana University East
Brice E. Hayes Hall
Renovations to Rooms 099, 135, 137, & 140
IU Project Number: 20170750

PROJECT NO. 7327	DATE 10-05-18
REV.	DATE

SET DESCRIPTION
Construction Set

SHEET TITLE
Interior Finish Plans

SHEET NUMBER

12-1