

Addendum D2

re: **CENTERVILLE-ABINGTON COMMUNITY SCHOOLS**
 Centerville-Abington Elementary School – Window Replacement
 473005.00

issue date: **January 16, 2023**

This Addendum forms a part of the Contract Documents for the above-referenced project and is issued in accordance with the Instructions to Bidders. Acknowledge receipt of this addendum by inserting its number in the space provided in the bid form.

ITEM	LOCATION	DESCRIPTION
A2.01	GENERAL CLARIFICATION	<p><u>CLARIFICATION:</u></p> <p>Basis of design storefront system shall be Kawneer Trifab® VersaGlaze® 451/451T Framing System, Front Glazed in lieu of Kawneer 451UT.</p>
A2.02	GENERAL CLARIFICATION	<p><u>CLARIFICATION:</u></p> <p>Storefront system shall be clear anodized and not custom color anodized finish.</p>
A2.03	SPECIFICATIONS Section 084113 Aluminum-Framed Entrances and Storefronts Page 5, 2.2, A	<p><u>ADD:</u></p> <p>Add the following approved manufacturer:</p> <p>6. Tubelite, Inc.</p> <p>The above manufacturer <u>must meet or exceed</u> the product Specifications.</p>



ITEM	LOCATION	DESCRIPTION
A2.04	DRAWING A2.1 (Drawing Reissued)	<u>ADD:</u> Two (2) clerestory windows have been added to the scope of the project. Location of existing clerestory windows have been located on reissued Sheet A2.1. Detail 3-A2.1 has been added to clarify scope of demolition for clerestory windows.
A2.05	DRAWING A4.31 (Drawing Reissued)	<u>ADD:</u> Elevation EX/K has been added to Sheet A4.31 as details 13-A4.31 and 14-A4.31 for new window installation at new condition.

Submitted by:
The Moake Park Group, Inc.



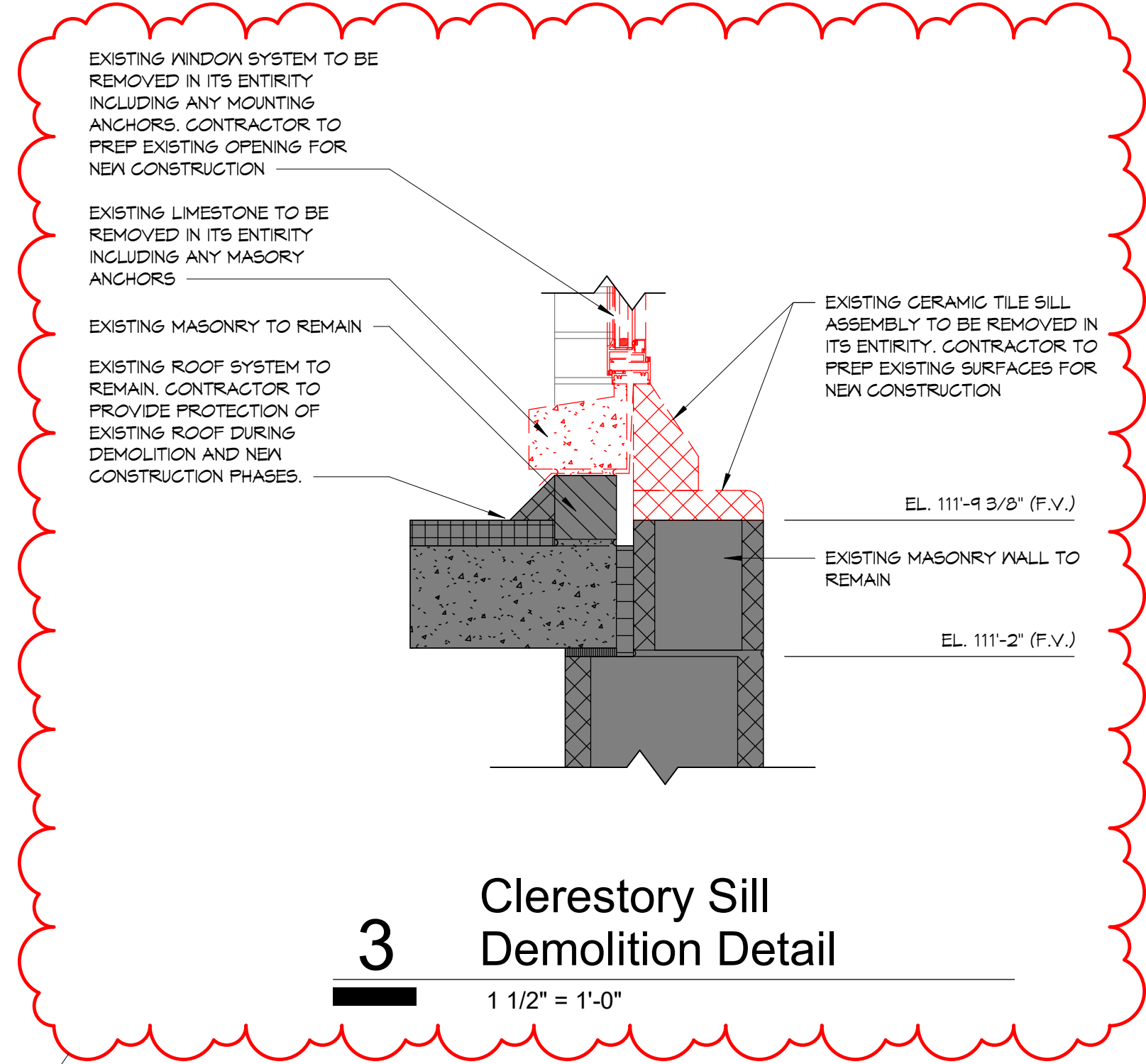
Jeremy M. Ogle, AIA, Principal

attachments: **(Reissued)** Drawing A2.1
(Reissued) Drawing A4.31

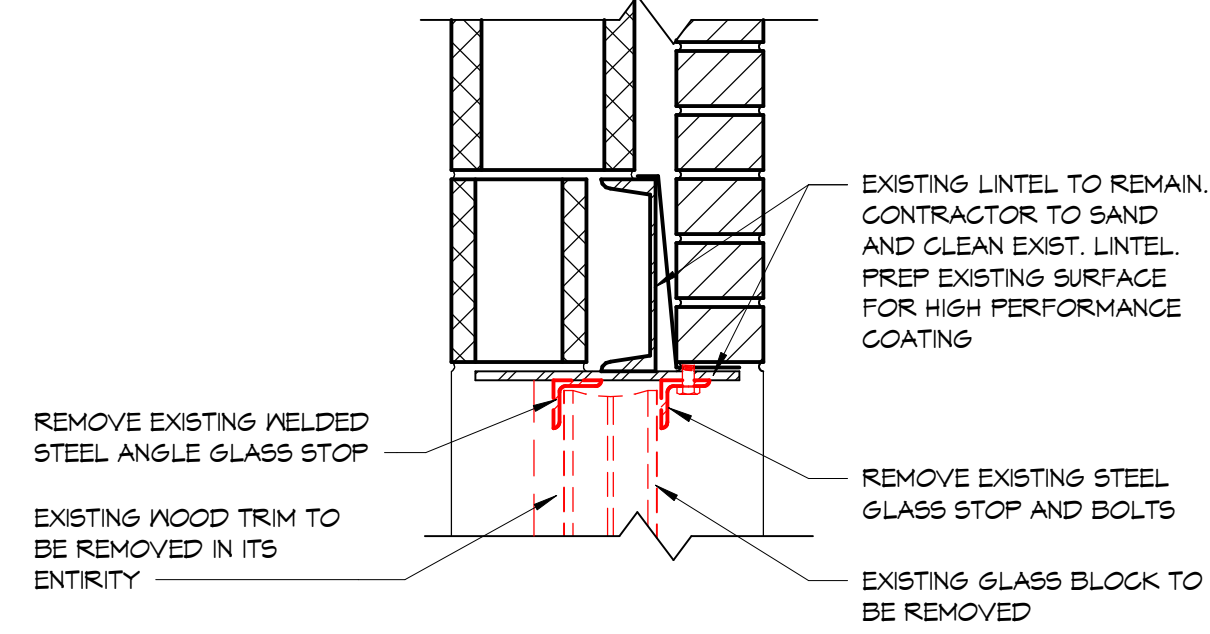
copies: All Plan Holders
473005.00/670



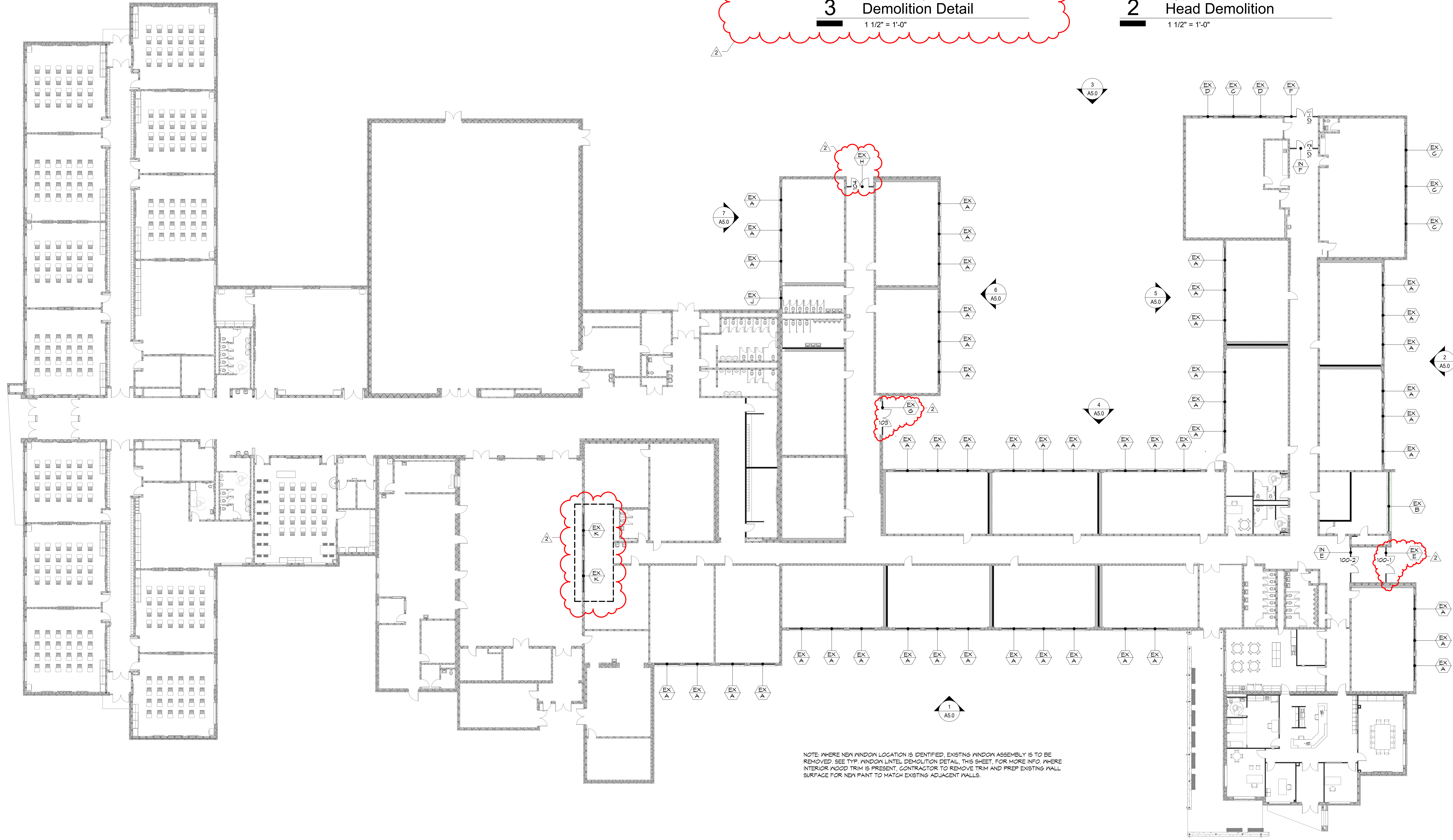
DOOR NUMBER	DOOR SLAB					DOOR FRAME			GLAZING	RATING	HARDWARE SET	ELECTRICAL REQ'D	REMARKS
	WIDTH	HEIGHT	THICKNESS	ELEVATION	MATERIAL	ELEVATION	MATERIAL	DEPTH					
100-2	8'-0"	7'-0"	2 1/4"	AL-1	ALUM	0	ALUM	4 1/2"	1" INSUL	0	001	SEE EX-E FOR MORE INFO	
101-1	8'-0"	7'-0"	2 1/4"	AL-1	ALUM	0	ALUM	4 1/2"	1" INSUL	0	001	SEE EX-F FOR MORE INFO	
101-2	8'-0"	7'-0"	2 1/4"	AL-1	ALUM	0	ALUM	4 1/2"	1" INSUL	0	001	SEE EX-F FOR MORE INFO	
102	8'-0"	7'-0"	2 1/4"	AL-1	ALUM	0	ALUM	4 1/2"	1" INSUL	0	001	SEE EX-G FOR MORE INFO	
103	8'-0"	7'-0"	2 1/4"	AL-1	ALUM	0	ALUM	4 1/2"	1" INSUL	0	001	SEE EX-H FOR MORE INFO	



3 Clerestory Sill Demolition Detail
1 1/2" = 1'-0"

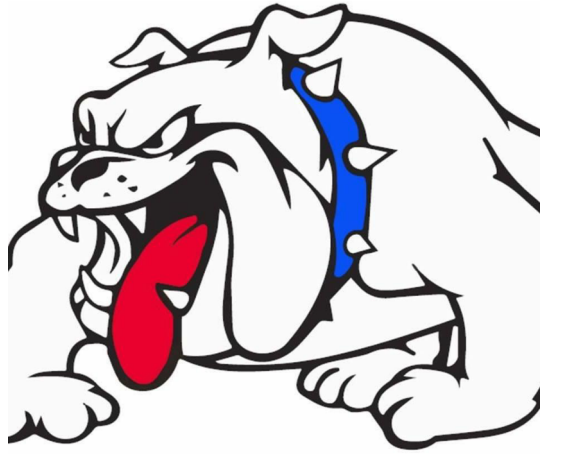


2 Typical Glass Block Head Demolition
1 1/2" = 1'-0"



NOTE: WHERE NEW WINDOW LOCATION IS IDENTIFIED, EXISTING WINDOW ASSEMBLY IS TO BE REMOVED. SEE TYP. WINDOW LINTEL DEMOLITION DETAIL, THIS SHEET, FOR MORE INFO. WHERE INTERIOR WOOD TRIM IS PRESENT, CONTRACTOR TO REMOVE TRIM AND PREP EXISTING WALL SURFACE FOR NEW PAINT TO MATCH EXISTING ADJACENT WALLS.

1 Reference Floor Plan
1/16" = 1'-0"



Centerville-Abington Elementary School

A PROJECT FOR:



Centerville-Abington Elementary School - Window Replacement

The concepts, ideas, plans, and details as shown on this document are the sole property of Moake Park Group, Inc. and were created, developed, and prepared for the use on this specific project. None of the concepts, ideas, plans, and details shall be used by any person, firm, or corporation for any purpose whatsoever without expressed written consent of Moake Park Group, Inc. The Owner shall be permitted to reproduce for informational and reference in connection with this project.

mark	date	description
1	1-9-23	Addendum 1
2	1-13-23	Addendum 2

Reference First Floor Plan and Door Schedule

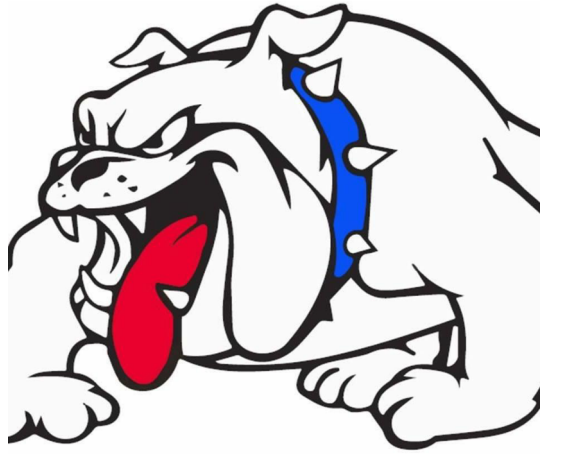
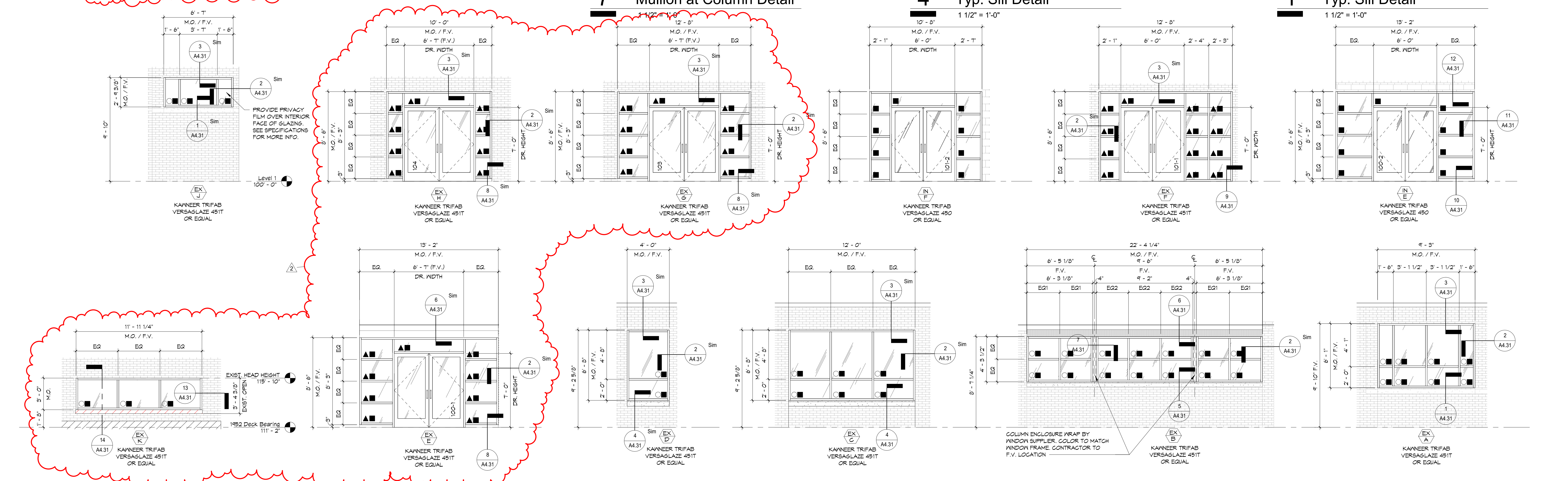
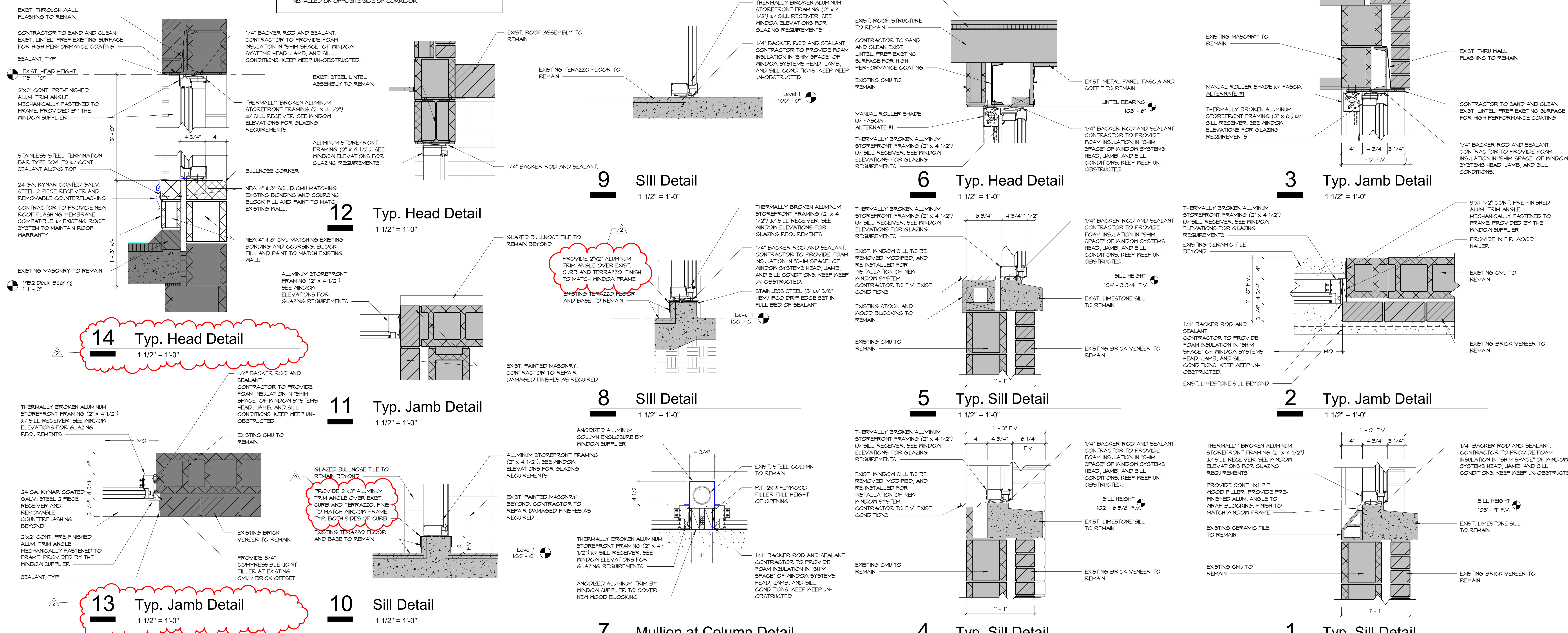
date: December 21, 2022
project: 473005
coordinator: JMO
drawn: KLR
checked: CDH

A2.1



Glazing Legend

- 1/4" CLEAR TEMPERED SAFETY GLASS
 - 1" LOW-E INSULATED GLAZING CONSISTING OF 1/4" TINTED, TEMPERED OUTSIDE LITE AND 1/4" CLEAR, TEMPERED INSIDE LITE w/ SOFT-COAT, LOW-E FILM AND 1/2" AIR SPACE
 - ▲ 1" LOW-E INSULATED GLAZING CONSISTING OF 1/4" TINTED, TEMPERED OUTSIDE LITE AND 1/4" CLEAR, TEMPERED INSIDE LITE w/ SOFT-COAT, LOW-E FILM AND 1/2" AIR SPACE. PROVIDE 3M 5800 SAFETY FILM AND 3M CALK SYSTEM.
- NOTE:
BORROWED LIGHT / INTERIOR WINDOW SYSTEM TO HAVE GLASS STOPS INSTALLED ON OPPOSITE SIDE OF CORRIDOR.



Centerville-Abington Elementary School

A PROJECT FOR:



Centerville-Abington Elementary School - Window Replacement

The concepts, ideas, plans, and details shown on this document are the sole property of Moake Park Group, Inc. and were created, developed, and prepared for the use on the specific project. None of the contents, ideas, designs, plans and details shall be used by any person, firm, or corporation for any purpose whatsoever without expressed written consent of Moake Park Group, Inc. The Owner shall be permitted to reproduce copies for information and reference in connection with this project.

mark	date	description
2	1-13-23	Addendum 2

Window Elevations and Details

date: December 21, 2022
project: 473005
coordinator: JMO
drawn: CDH
checked: A4.31