

A Project For :

Centerville-Abington Community Schools

Centerville-Abington Elementary - Window Replacement

Centerville Indiana

MPG Project #473005.00

Centerville-Abington Community Schools Board of Trustees

Todd Duke - President
Renee Westover - Vice President
Susan Hamilton - Secretary
Brad Lambright - Member
Andy Wandersee - Member

School Administration

Dr. Mike McCoy - Superintendent
Sean Stevenson - Assistant Superintendent
Kelly VanWinkle - Principal

Architect:

Moake Park Group, Inc.
7223 Engel Rd. Suite 200
Ft. Wayne, IN 46804
ph. (260) 424-6516
web: www.moakepark.com



Project Location 

Architectural Drawing List

Architectural
A2.1 Reference First Floor Plan and Door Schedule
A4.31 Window Elevations and Details
A5.0 Reference Exterior Elevations

MOAKE PARK GROUP
ARCHITECTURE INTERIORS PLANNING
7223 Engel Rd. Suite 200, Fort Wayne, IN 46804 260-424-6516
www.moakepark.com

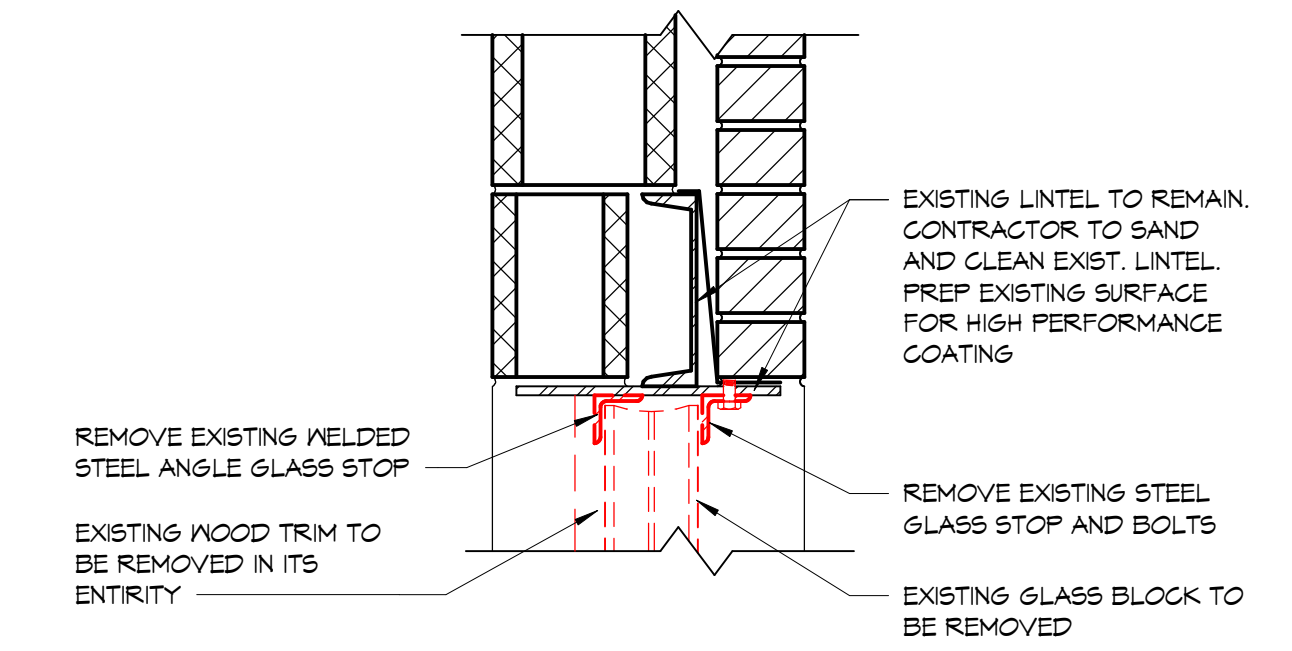
Commission No. 473005
December 21, 2022



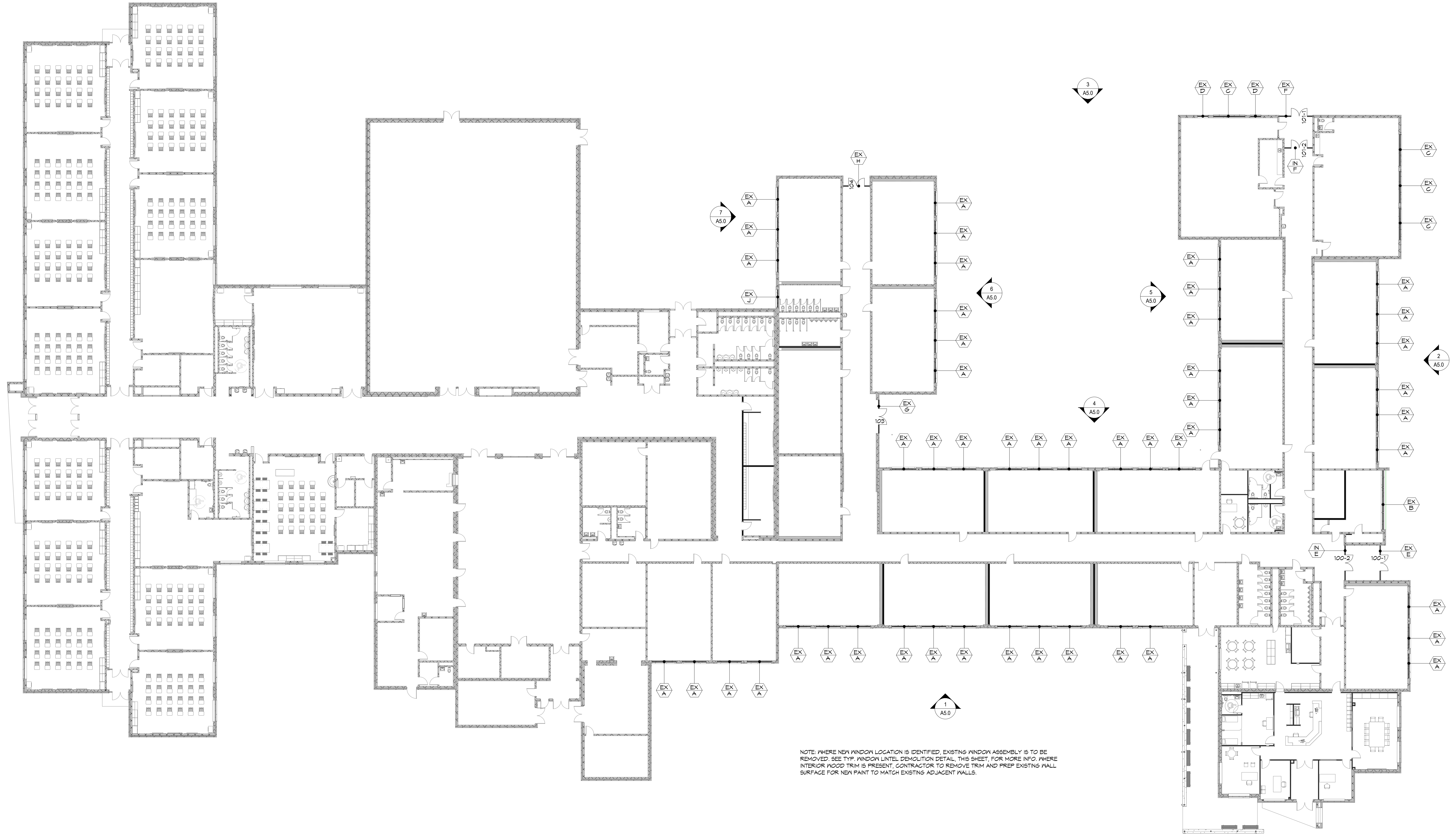
Set No.



DOOR NUMBER	DOOR SLAB				DOOR FRAME			GLAZING	RATING	HARDWARE SET	ELECTRICAL REQ'D	REMARKS
	WIDTH	HEIGHT	THICKNESS	ELEVATION	ELEVATION	MATERIAL	DEPTH					
100-1	6'-0"	T-0"	2 1/4"	AL-1	ALUM	0	ALUM	4 1/2"	1" NSUL	0		SEE EX-E FOR MORE INFO.
100-2	6'-0"	T-0"	1 3/4"	AL-1	ALUM	0	ALUM	4 1/2"	1/4" TEMP	0		SEE IN-E FOR MORE INFO.
101-1	6'-0"	T-0"	2 1/4"	AL-1	ALUM	0	ALUM	4 1/2"	1" NSUL	0		SEE EX-F FOR MORE INFO.
101-2	6'-0"	T-0"	1 3/4"	AL-1	ALUM	0	ALUM	4 1/2"	1/4" TEMP	0		SEE IN-F FOR MORE INFO.
103	6'-0"	T-0"	2 1/4"	AL-1	ALUM	0	ALUM	4 1/2"	1" NSUL	0		SEE EX-G FOR MORE INFO.
104	6'-0"	T-0"	2 1/4"	AL-1	ALUM	0	ALUM	4 1/2"	1" NSUL	0		SEE EX-H FOR MORE INFO.



2 Typical Glass Block Head Demolition
 1 1/2" = 1'-0"



NOTE: WHERE NEW WINDOW LOCATION IS IDENTIFIED, EXISTING WINDOW ASSEMBLY IS TO BE REMOVED. SEE TYP. WINDOW LITEL DEMOLITION DETAIL, THIS SHEET, FOR MORE INFO. WHERE INTERIOR WOOD TRIM IS PRESENT, CONTRACTOR TO REMOVE TRIM AND PREP EXISTING WALL SURFACE FOR NEW PAINT TO MATCH EXISTING ADJACENT WALLS.



Centerville-Abington Elementary School

A PROJECT FOR:



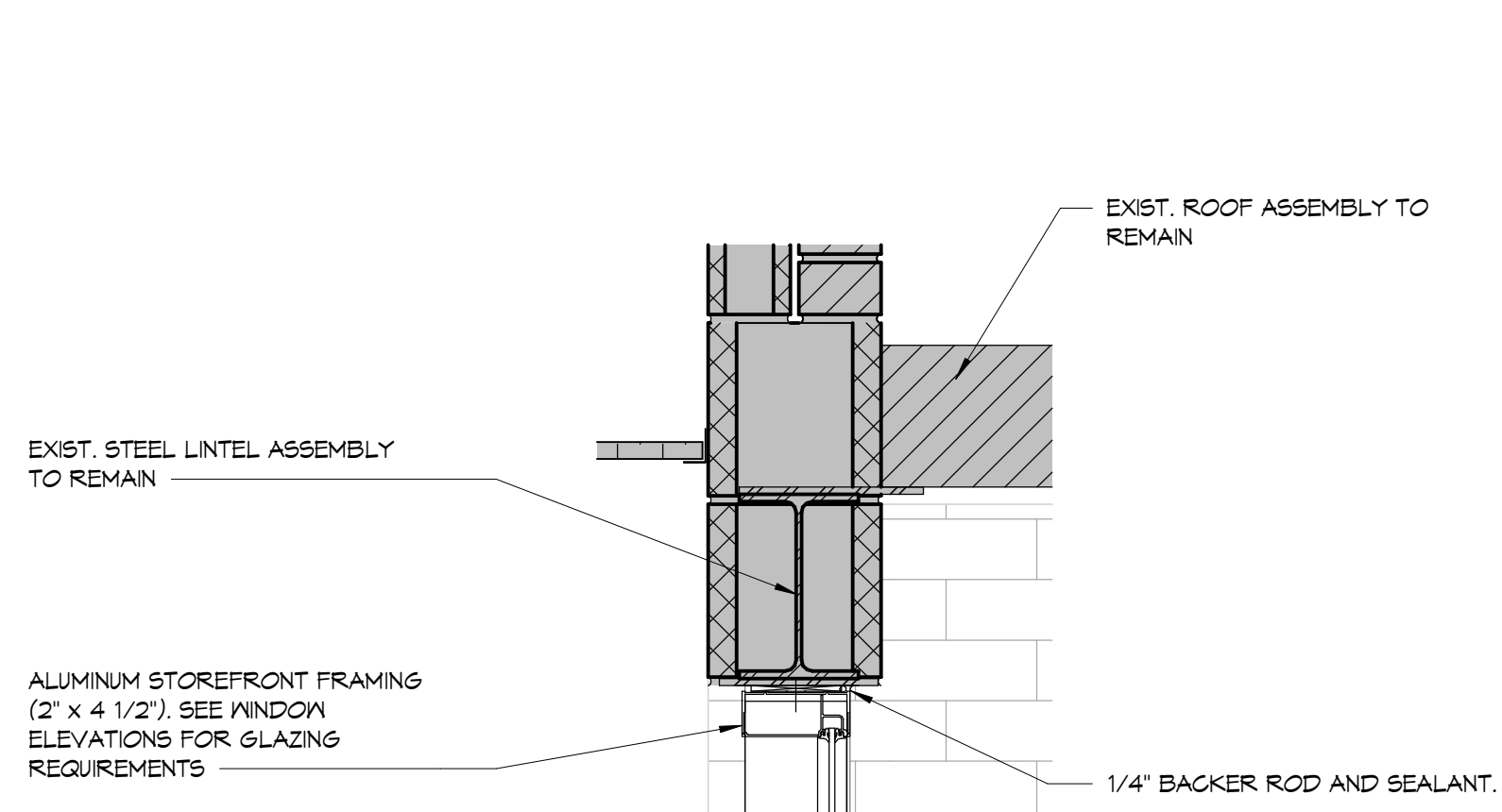
Centerville-Abington Elementary School - Window Replacement

The concepts, ideas, plans, and details shown on this document are the sole property of Moake Park Group, Inc. and were created, developed, and prepared for the use on this specific project. None of the concepts, ideas, plans, and details shall be used by any party, firm, or corporation for any purpose whatsoever without expressed written consent of Moake Park Group, Inc. The Owner shall be permitted to reproduce for informational and reference to connections with this project.

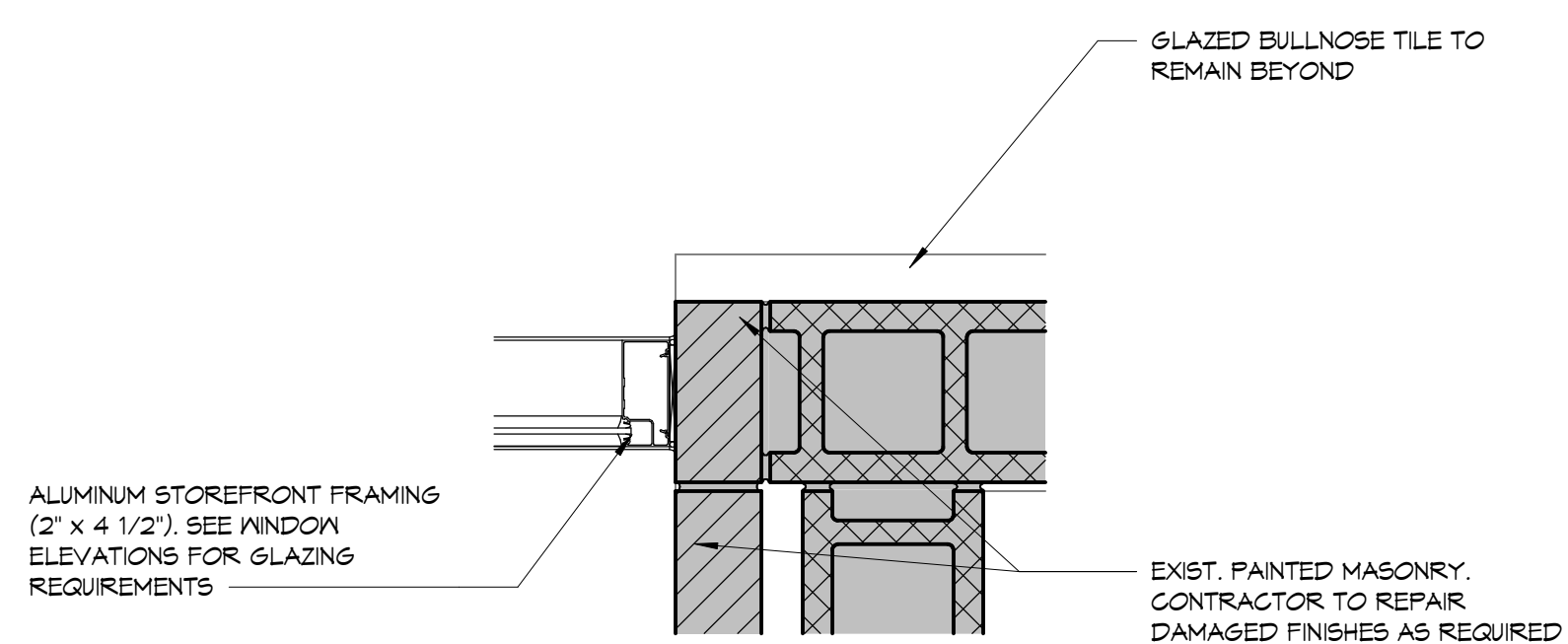
mark	date	description

Reference First Floor Plan and Door Schedule

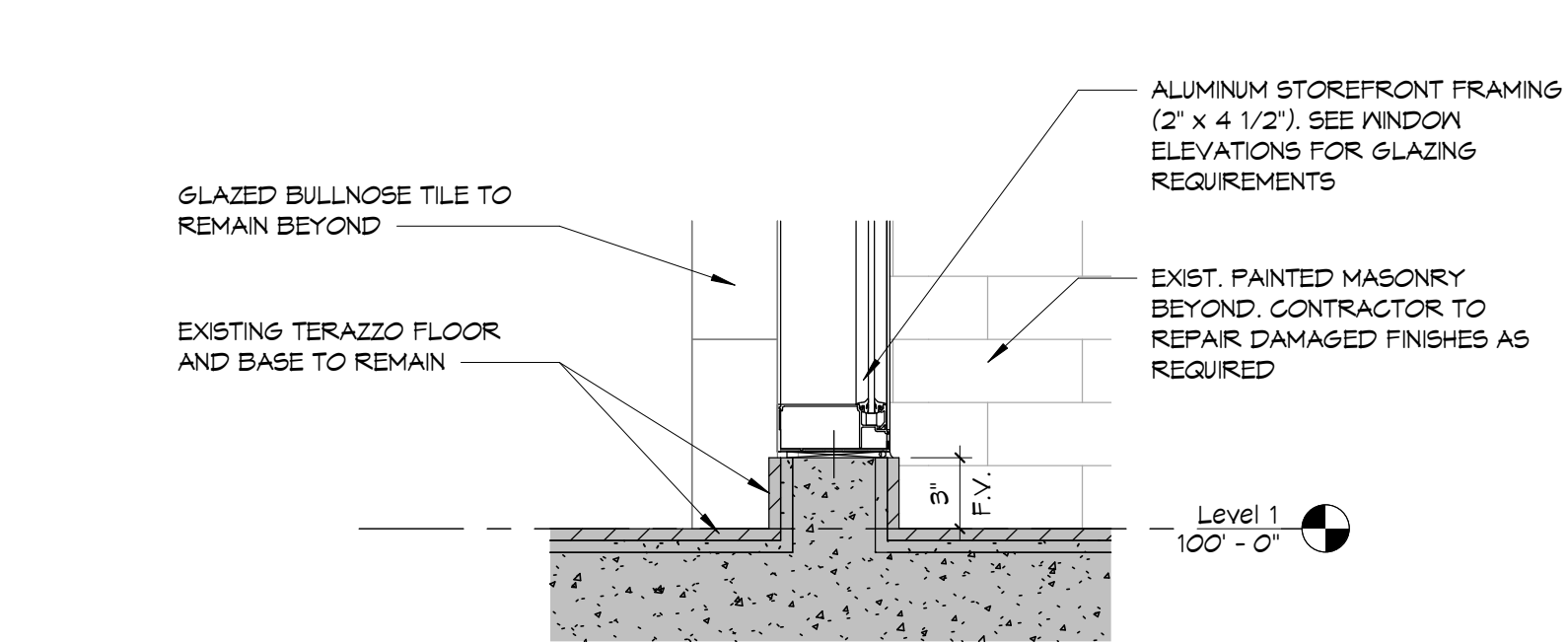
1 Reference Floor Plan
 1/16" = 1'-0"



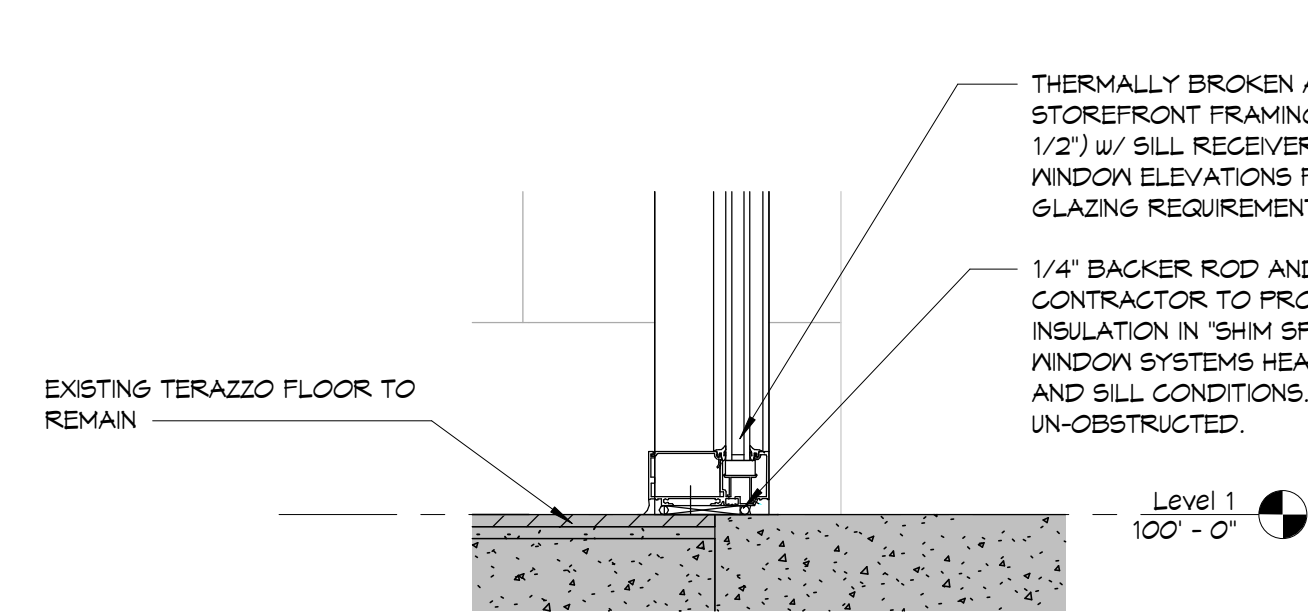
12 Typ. Head Detail
1 1/2" = 1'-0"



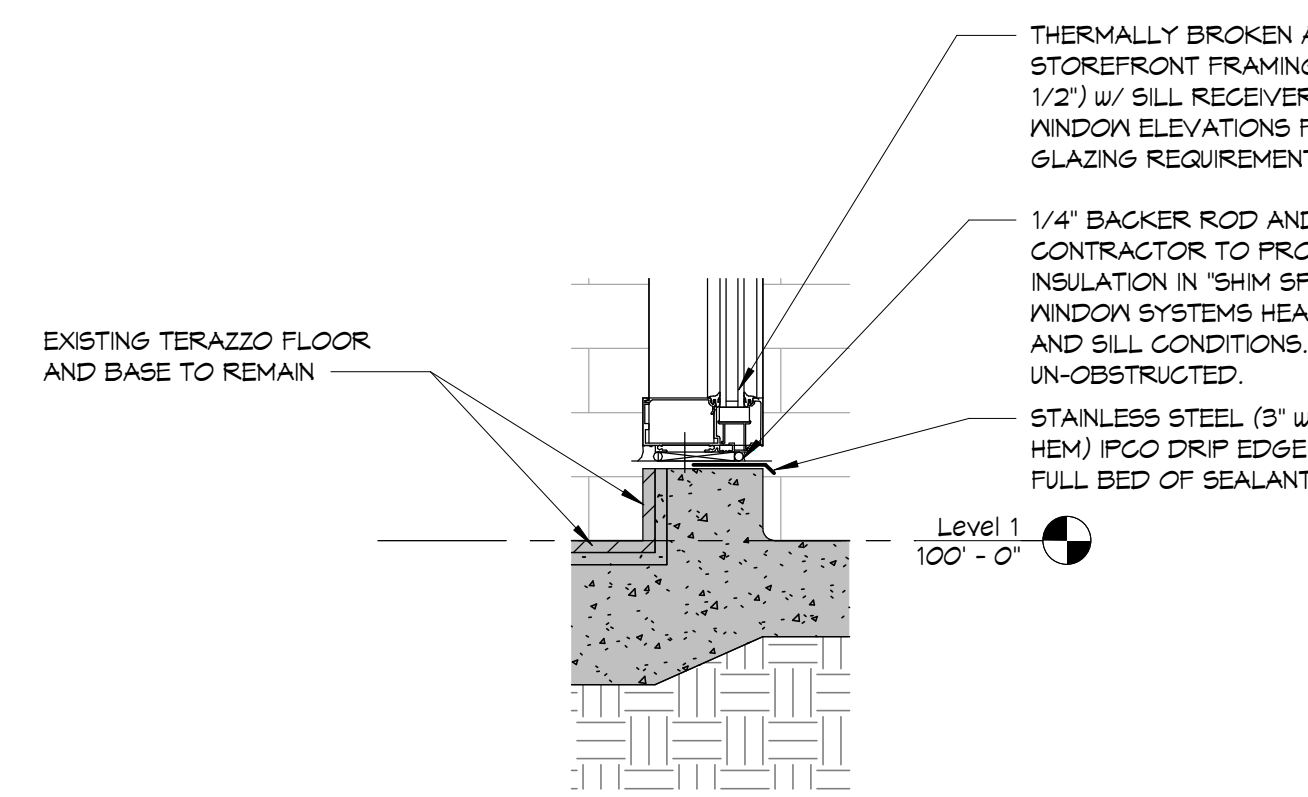
11 Typ. Jamb Detail
1 1/2" = 1'-0"



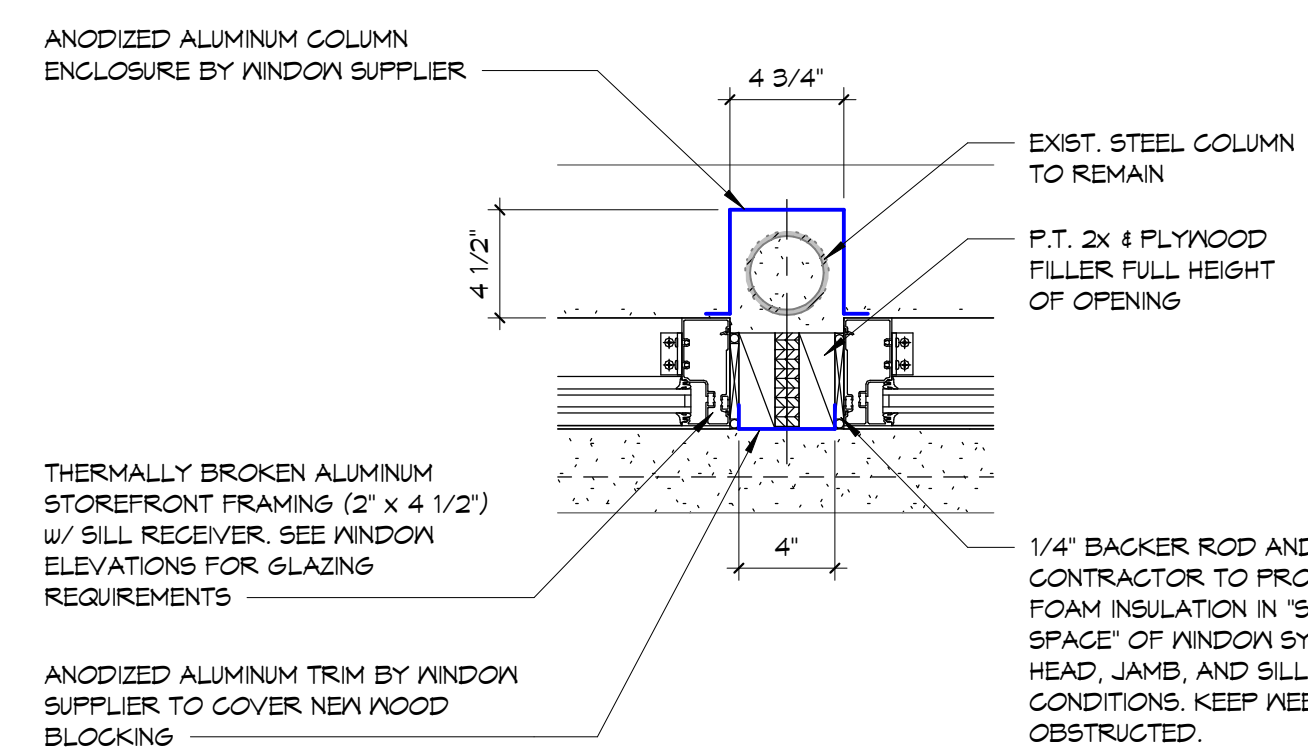
10 Sill Detail
1 1/2" = 1'-0"



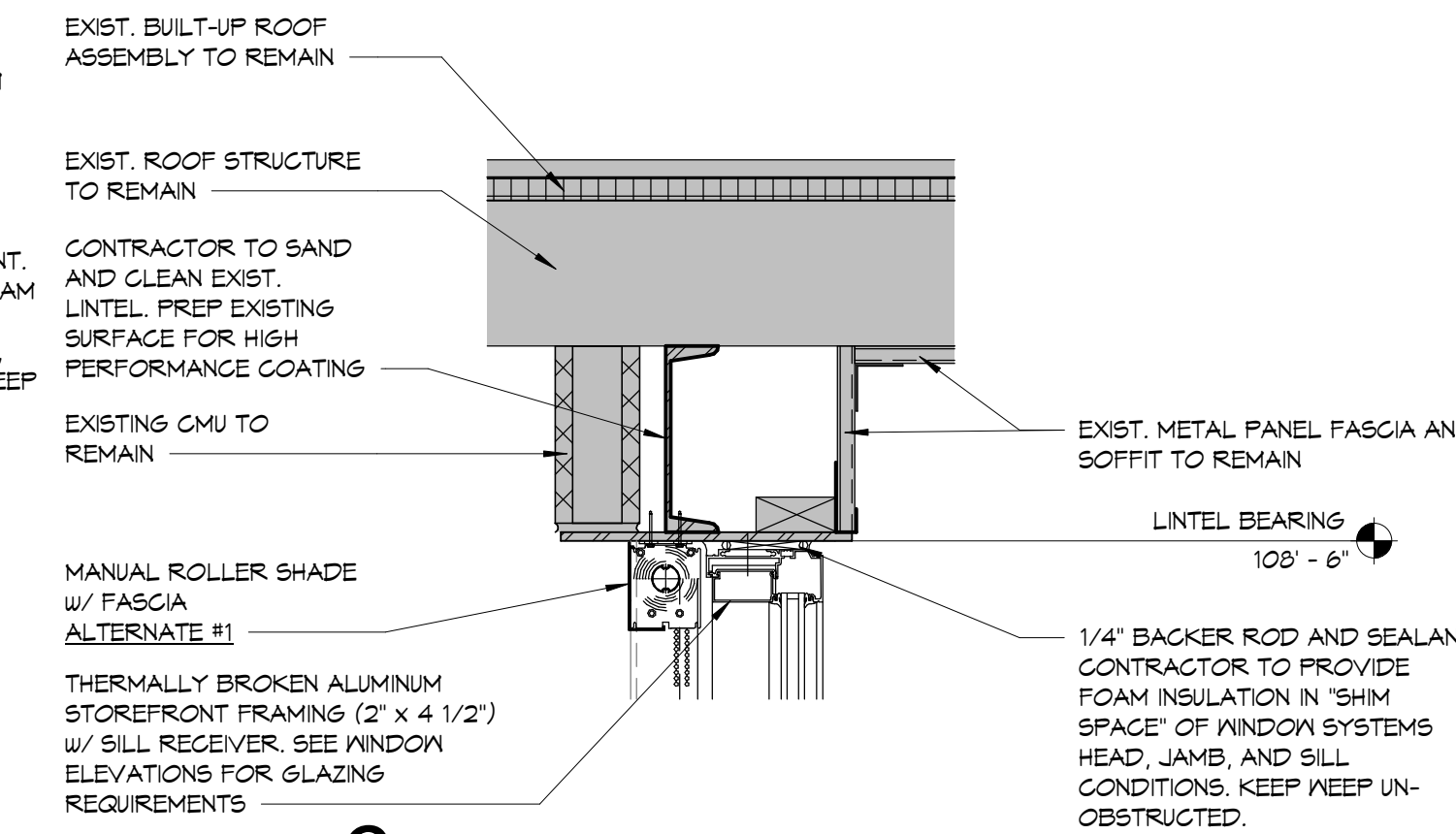
9 Sill Detail
1 1/2" = 1'-0"



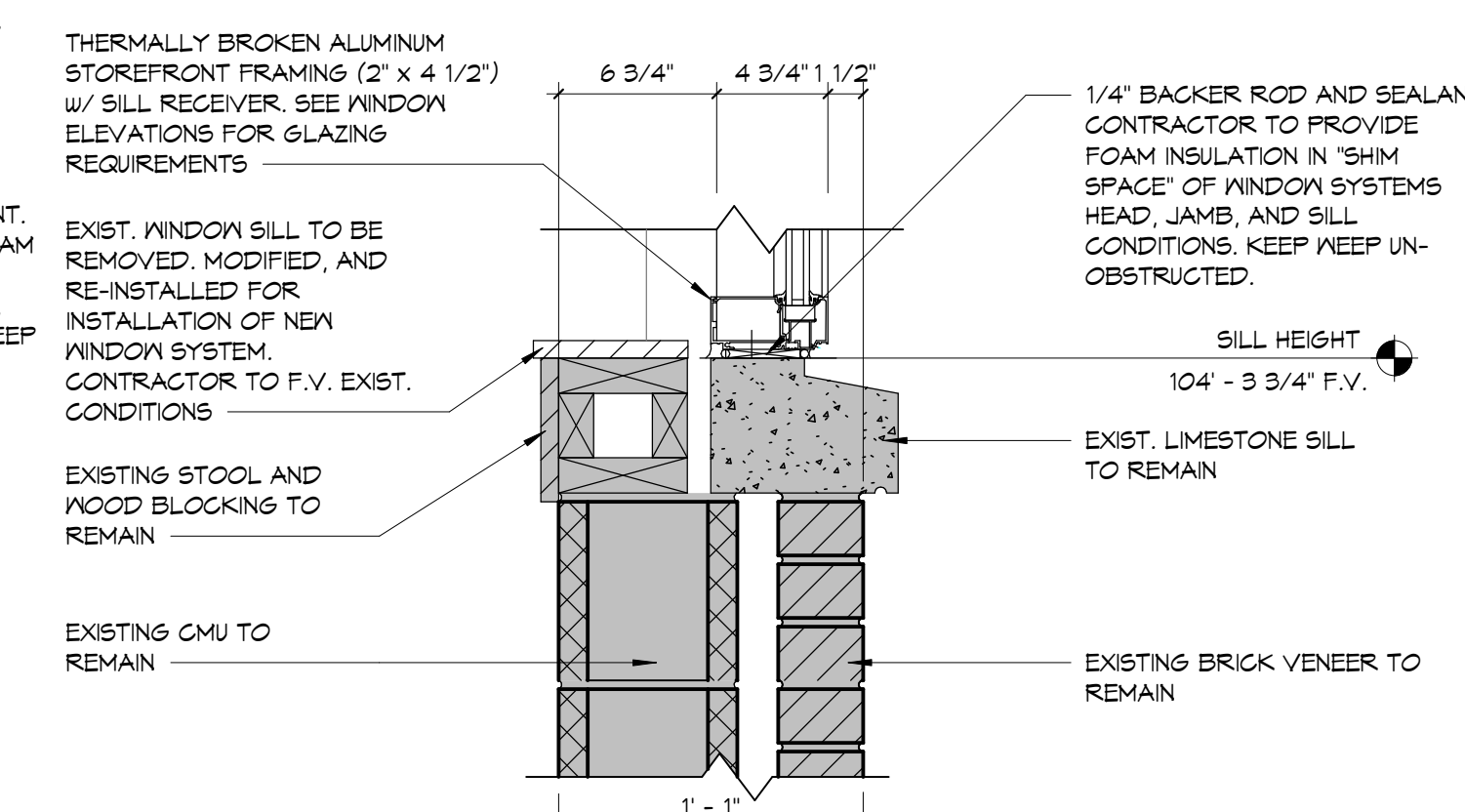
8 Sill Detail
1 1/2" = 1'-0"



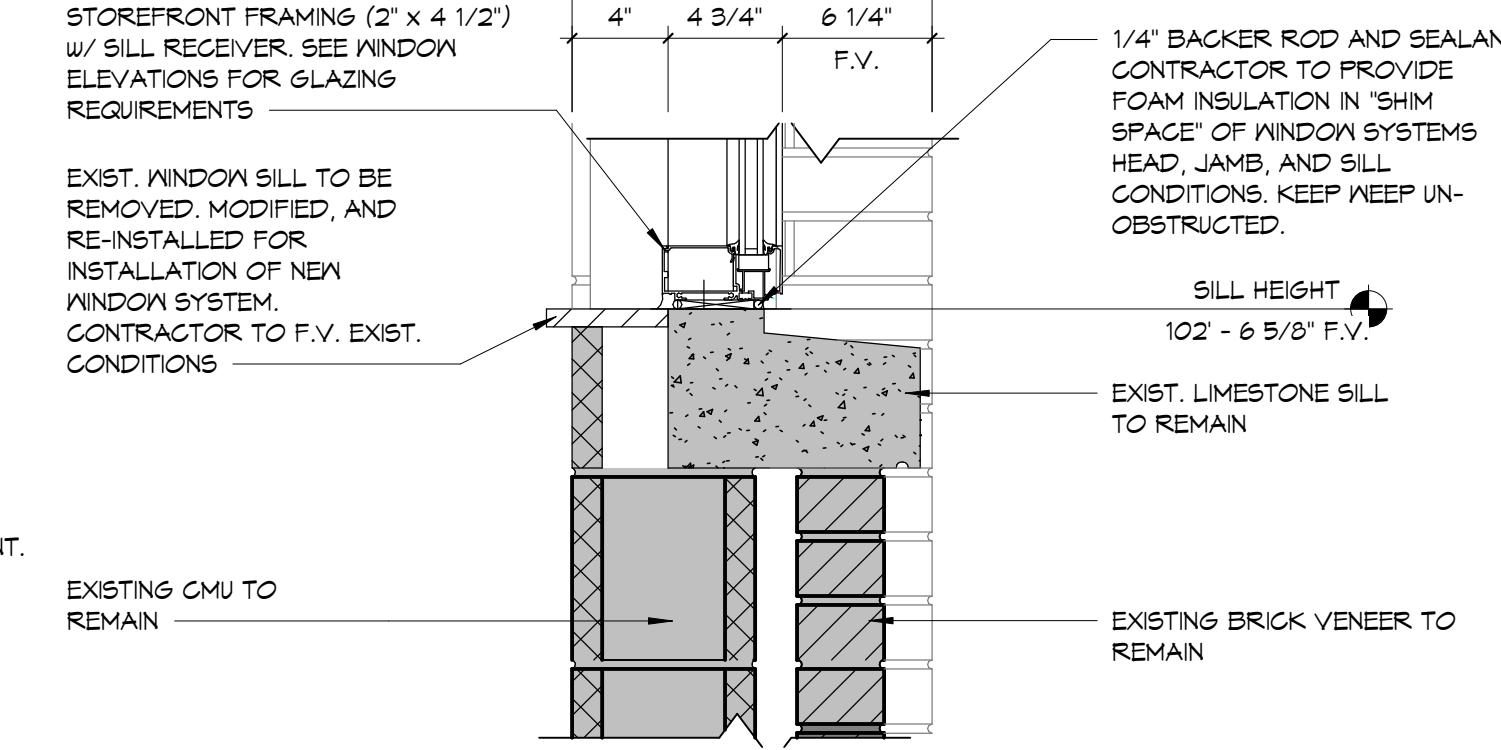
7 Mullion at Column Detail
1 1/2" = 1'-0"



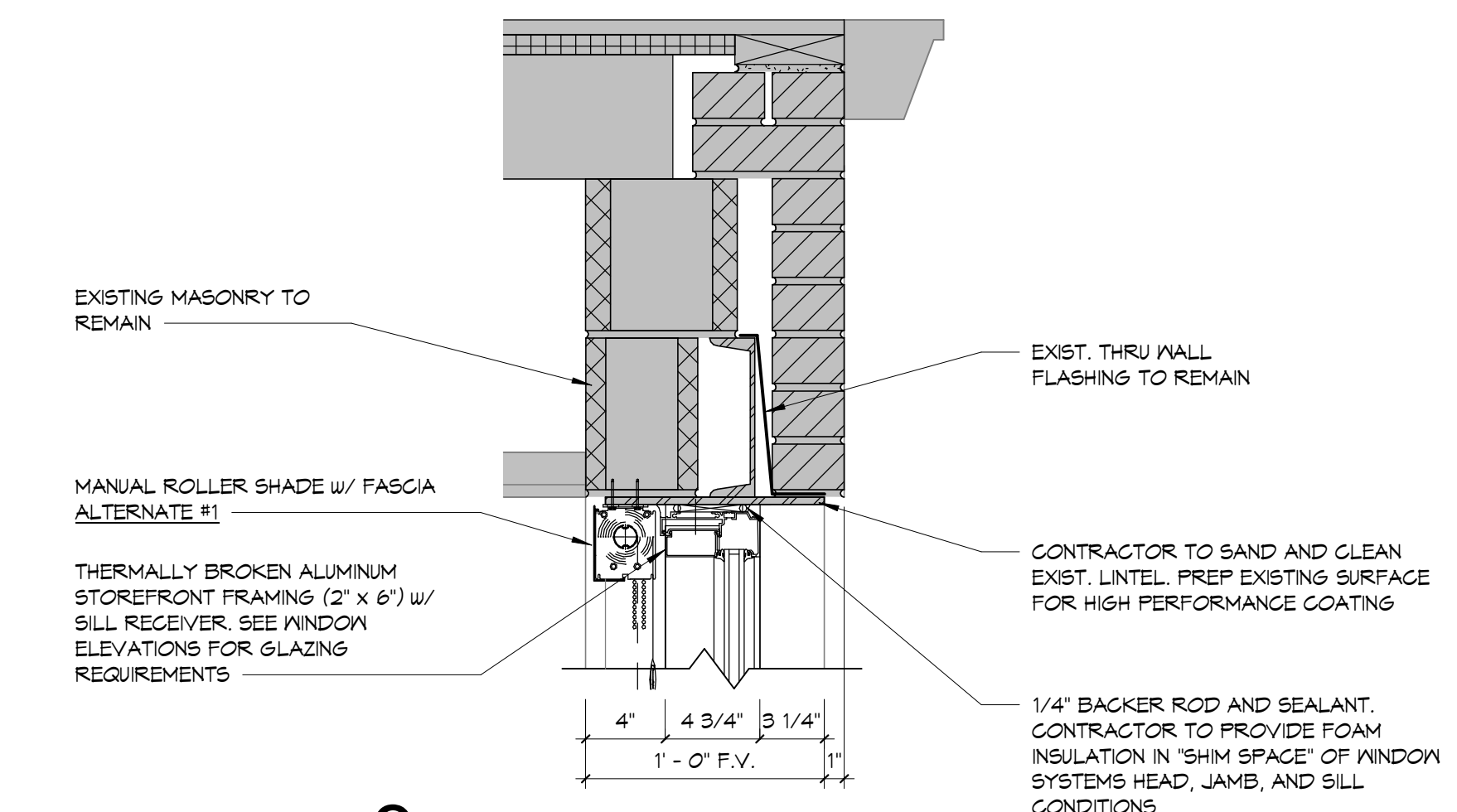
6 Typ. Head Detail
1 1/2" = 1'-0"



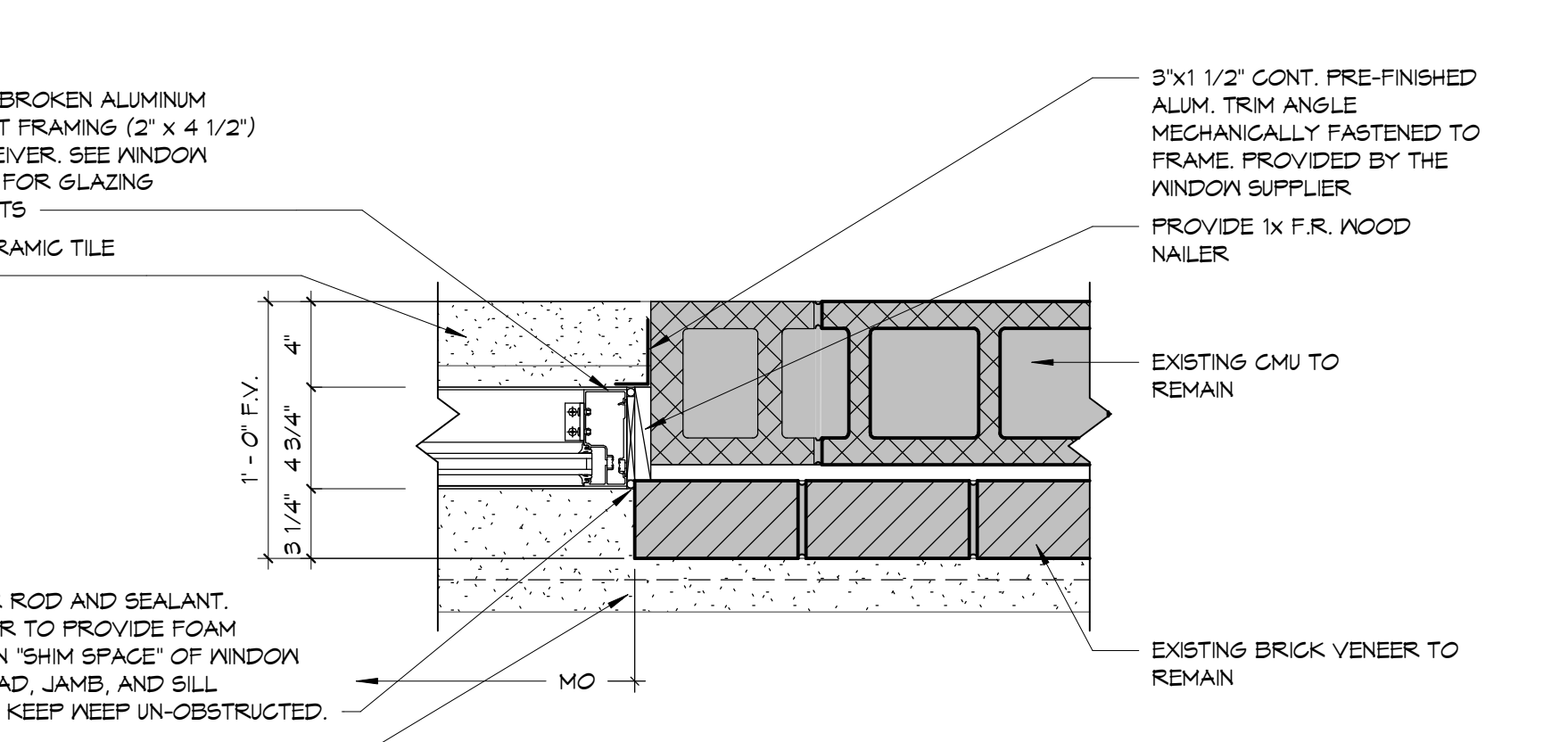
5 Typ. Sill Detail
1 1/2" = 1'-0"



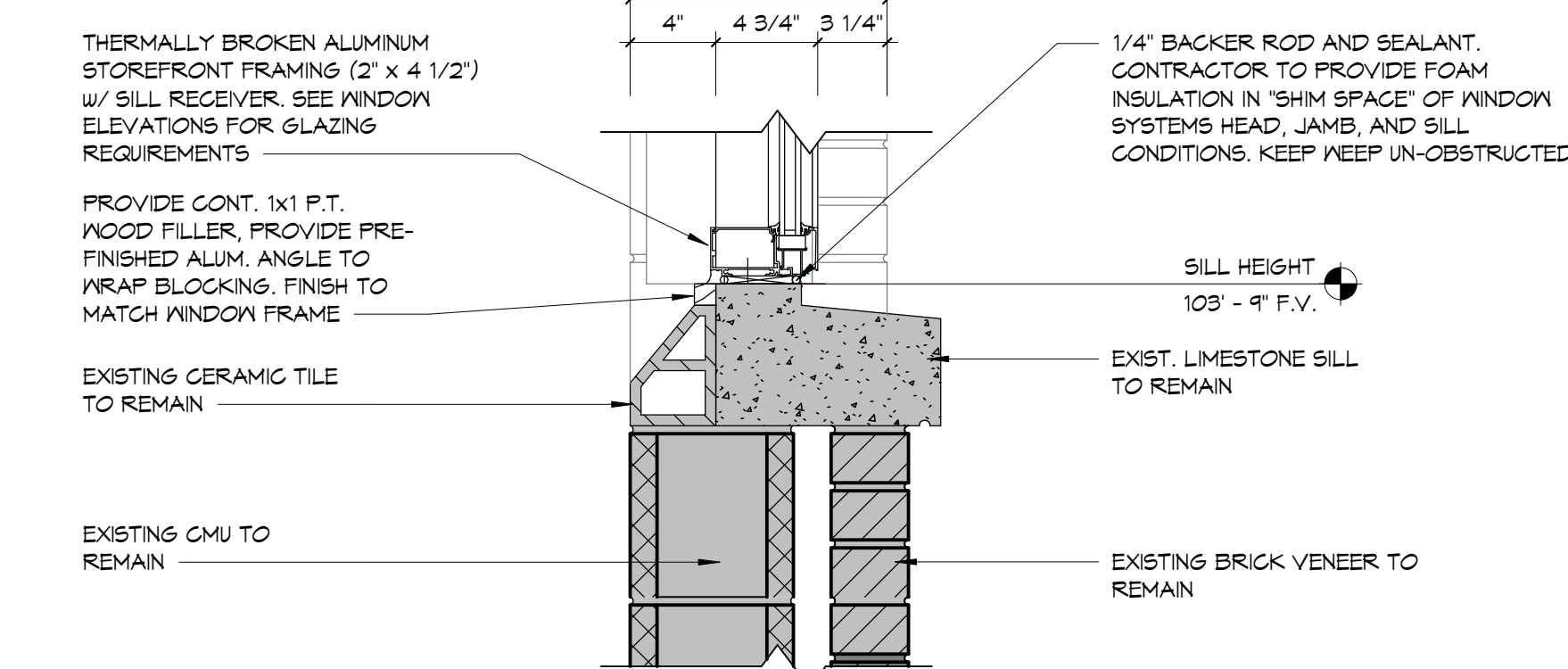
4 Typ. Sill Detail
1 1/2" = 1'-0"



3 Typ. Jamb Detail
1 1/2" = 1'-0"

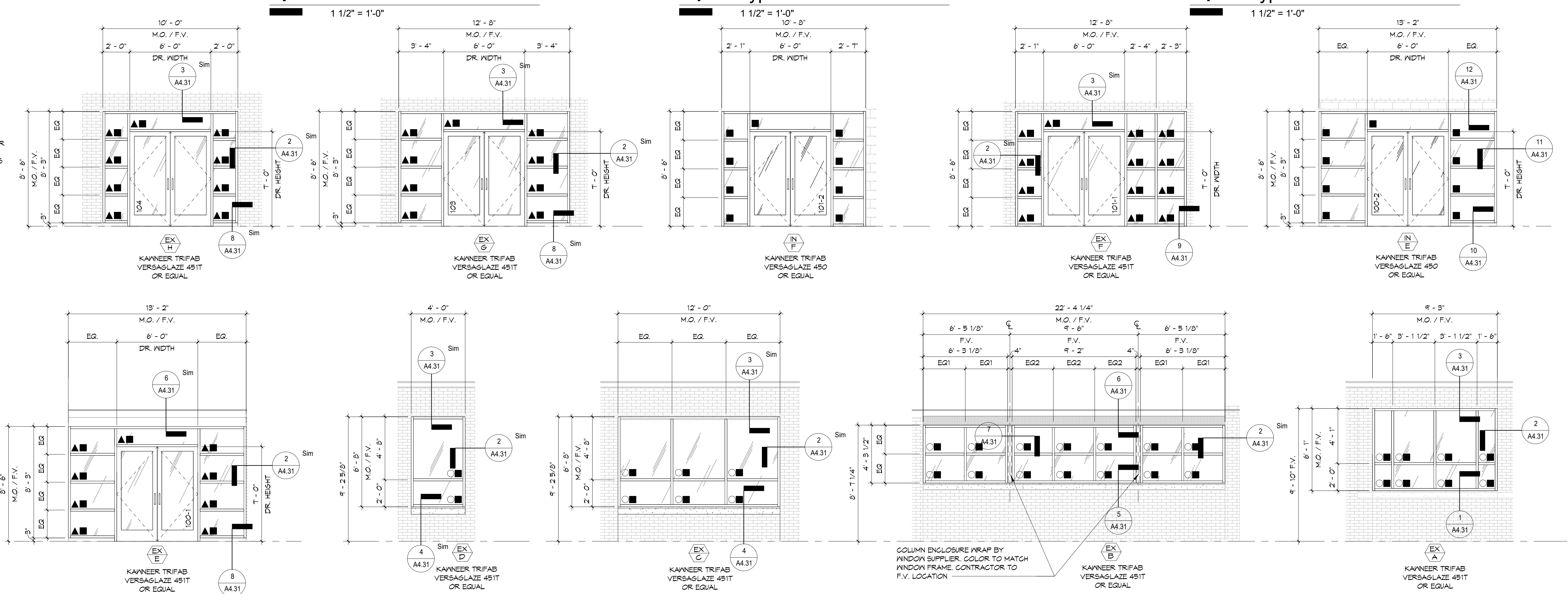


2 Typ. Jamb Detail
1 1/2" = 1'-0"



1 Typ. Sill Detail
1 1/2" = 1'-0"

- Glazing Legend**
- 1/4" CLEAR TEMPERED SAFETY GLASS
 - 1" LOW-E INSULATED GLAZING CONSISTING OF 1/4" TINTED, TEMPERED OUTSIDE LITE AND 1/4" CLEAR, TEMPERED INSIDE LITE w/ SOFT-GOAT, LOW-E FILM AND 1/2" AIR SPACE
 - 1" LOW-E INSULATED GLAZING CONSISTING OF 1/4" TINTED, TEMPERED OUTSIDE LITE AND 1/4" CLEAR, TEMPERED INSIDE LITE w/ SOFT-GOAT, LOW-E FILM AND 1/2" AIR SPACE. PROVIDE 3M 8500 SAFETY FILM AND 3M CAULK SYSTEM.
- NOTE: BORROWED LIGHT / INTERIOR WINDOW SYSTEM TO HAVE GLASS STOPS INSTALLED ON OPPOSITE SIDE OF CORRIDOR.



Centerville-Abington Elementary School

A PROJECT FOR:



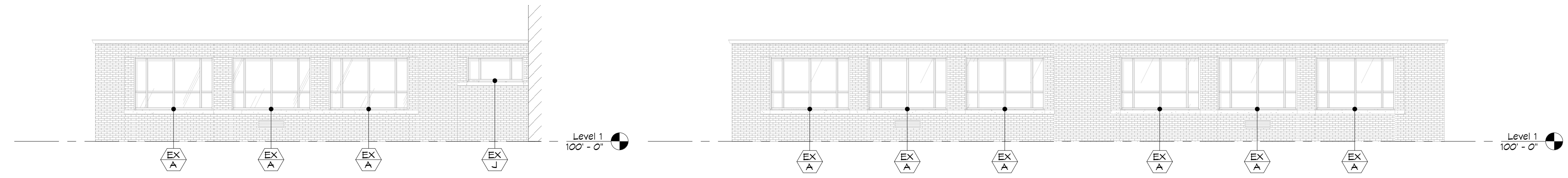
Centerville-Abington Elementary School - Window Replacement

The concepts, ideas, plans, and details shown on this document are the sole property of Moake Park Group, Inc. and are not to be used, reproduced, or transmitted for any purpose without the express written consent of Moake Park Group, Inc. The Owner shall be responsible to inform all subcontractors and vendors of this project.

mark	date	description

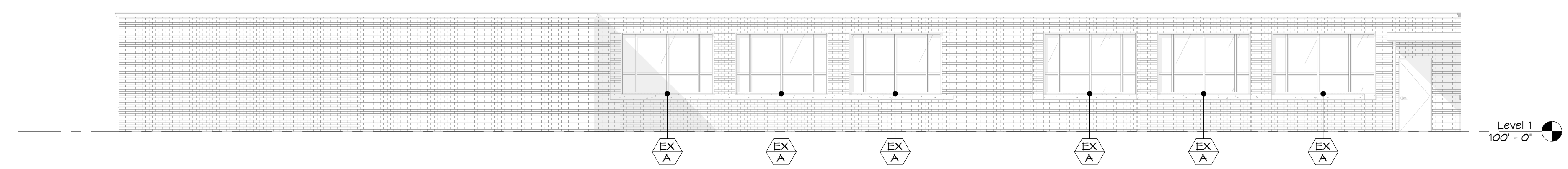
Window Elevations and Details

date: December 21, 2022
project: 473005
coordinator: JMO
drawn: CDH
checked: A4.31

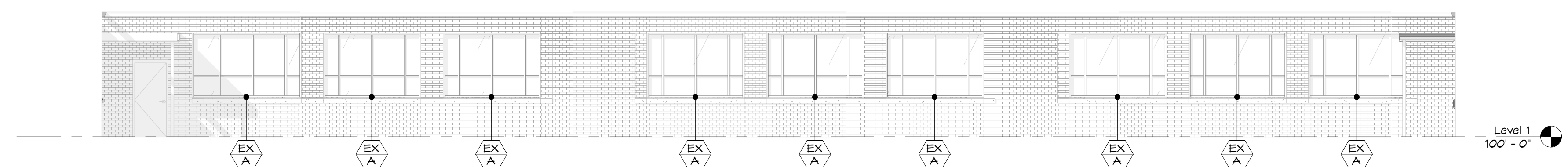


7 Partial South Elevation
 1/8" = 1'-0"

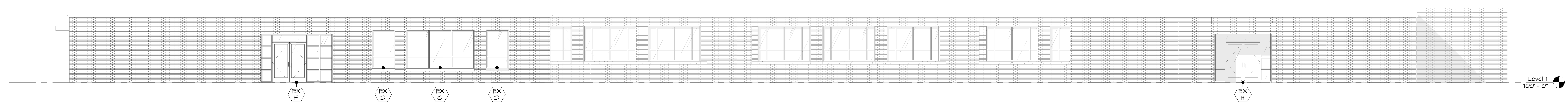
6 Partial South Elevation -
 Courtyard
 1/8" = 1'-0"



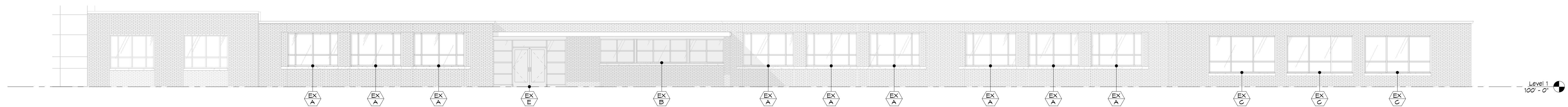
5 Partial North Elevation -
 Courtyard
 1/8" = 1'-0"



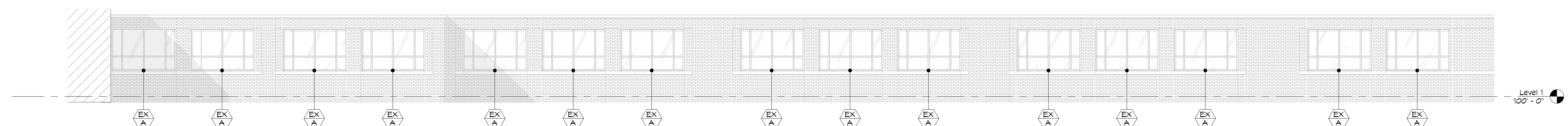
4 Partial West Elevation -
 Courtyard
 1/8" = 1'-0"



3 Partial West Elevation
 1/8" = 1'-0"



2 Partial North Elevation
 1/8" = 1'-0"



1 Partial East Elevation
 1/8" = 1'-0"



Centerville-Abington
 Elementary School

A PROJECT FOR:



Centerville-Abington Elementary
 School - Window Replacement

The concepts, ideas, plans, and details as shown on this document are the sole property of Moake Park Group, Inc. and were created, developed, and prepared for the use on this specific project. None of the concepts, ideas, designs, plans and details shall be used by any person, firm, or corporation for any purpose whatsoever without expressed written consent of Moake Park Group, Inc. The Owner shall be permitted to reproduce for informational and reference in connection with this project.

mark	date	description

Reference Exterior
 Elevations

date: December 21, 2022
 project: 473005
 coordinator: JMO
 drawn: CDH
 checked: Checker

A5.0