

Addendum D3

re: **Centerville-Abington Community Schools**
Centerville-Abington Transportation Building
 473003.00

issue date: **March 25, 2022**

This Addendum forms a part of the Contract Documents for the above-referenced project and is issued in accordance with the Instructions to Bidders. Acknowledge receipt of this addendum by inserting its number in the space provided in the bid form.

ITEM	LOCATION	DESCRIPTION
A3.01	SPECIFICATIONS Table of Contents (Reissued)	<u>CHANGE:</u> Issued as part of Addendum D3 is the REVISED Table of Contents that shall be included as an integral part of the project construction documents.
A3.02	DRAWING Sheet A4.0	<u>CHANGE:</u> CHANGE door thickness for Door 100 from 2 ¼" to 1 ¾". Drawing not reissued.
<u>CIVIL:</u>		
C3.1	DRAWING C4.0 Site Utility Plan (Drawing Reissued)	<u>ADD:</u> Added Utility Tag #16 to the plan to reference the Oil Interceptor detail. See reissued sheet C4.0.
C3.2	DRAWING C7.1 Site Detail Sheet (Drawing Reissued)	<u>ADD:</u> Added Detail #9 – Oil Interceptor detail and Detail #10 – Inlet Type I detail to the project.



Addendum D3

Centerville-Abington Transportation Building

March 25, 2022

Page 2

ITEM	LOCATION	DESCRIPTION
------	----------	-------------

Submitted by:

The Moake Park Group, Inc.



Jeff E. Schroeder
Project Architect



attachments: Revised Table of Contents
Drawing C4.0
Drawing C7.1

copies: All Plan Holders
473003/670

Project Manual**REVISED TABLE OF CONTENTS****VOLUME 1 of 2**

CERTIFICATION PAGE

TABLE OF CONTENTS

BIDDING REQUIREMENTS AND FORMS

Notice to Bidders

Instructions to Bidders (AIA Document A701)

Bid Bond (AIA Document A310)

Form 96, Contractor's Bid for Public Works

Supplementary Bid Form

Contractor's Statement of Equal Employment Opportunity

Contractor's Qualification Statement (AIA Document A305)

Exhibit A – General Information (AIA Document A305)

Exhibit B – Financial & Performance Information (AIA Document A305)

Exhibit C – Project Specific Information (AIA Document A305)

Exhibit D – Contractor's Past Project Experience (AIA Document A305)

Exhibit E – Contractor's Past Project Experience, Continued (AIA Document A305)

Proposal Request (AIA Document G709)

Construction Change Directive (AIA Document G714)

Change Order (AIA Document G701)

Architect's Supplemental Instructions (AIA Document G710)

Certificate of Substantial Completion (AIA Document G704)

Application and Certificate for Payment (AIA Document G702)

Continuation Sheet (AIA Document G703)

Standard Form of Agreement Between Owner and Contractor *where the basis of payment is a Stipulated Sum* (AIA Document A101-2017)

Insurance and Bonds Exhibit A – (AIA Document A101-2017)

GENERAL CONDITIONS

General Conditions of the Contract for Construction (AIA Document A201)

Supplementary Conditions

Performance Bond (AIA Document A312)

Payment Bond (AIA Document A312)

1 **SPECIFICATIONS**

2

3 **DIVISION 01 – GENERAL REQUIREMENTS**

4

5	011000	Summary
6	012100	Allowances
7	012300	Alternates
8	012500	Substitution Procedures
9	012600	Contract Modification Procedures
10	012900	Payment Procedures
11	013100	Project Management and Coordination
12	013200	Construction Progress Documentation
13	013300	Submittal Procedures
14	014500	Quality Control
15	015000	Temporary Facilities and Controls
16	016000	Product Requirements
17	017300	Execution
18	017329	Cutting and Patching
19	017400	Cleaning and Waste Management
20	017700	Closeout Procedures
21	017800	Closeout Submittals

22

23 **DIVISION 02 – EXISTING CONDITIONS**

24

25	021111	Soils Report (<i>Issued Via Addendum D1</i>)
----	--------	--

26

27 **DIVISION 03 – CONCRETE**

28

29	033000	Cast-in-Place Concrete
----	--------	------------------------

30

31 **DIVISION 04 – MASONRY**

32

33	042000	Unit Masonry
----	--------	--------------

34

35 **DIVISION 05 – METALS**

36

37	051200	Structural Steel Framing
38	053100	Steel Decking
39	054000	Cold Formed Metal Framing
40	055000	Metal Fabrications
41	055100	Metal Stairs
42	055213	Pipe and Tube Railings

43

44 **DIVISION 06 – WOOD, PLASTICS, AND COMPOSITES**

45

46	061053	Miscellaneous Rough Carpentry
----	--------	-------------------------------

1	061600	Sheathing
2		
3	DIVISION 07 – THERMAL AND MOISTURE PROTECTION	
4		
5	071900	Water Repellents
6	072100	Thermal Insulation
7	076200	Sheet Metal Flashing and Trim
8	077253	Snow Guards <i>(Issued Via Addendum D1)</i>
9	079200	Joint Sealants
10		
11	DIVISION 08 – OPENINGS	
12		
13	081113	Hollow Metal Doors and Frames
14	081416	Flush Wood Doors
15	083613	Sectional Doors
16	084113	Aluminum Framed Entrances & Storefronts
17	087100	Door Hardware <i>(Issued via Addendum D1)</i>
18	088000	Glazing
19		
20	DIVISION 09 – FINISHES	
21		
22	092216	Non-Structural Metal Framing
23	095113	Acoustical Panel Ceilings
24	096513	Resilient Base and Accessories
25	096519	Resilient Tile Flooring
26	099100	Painting
27		
28	DIVISION 10 – SPECIALTIES	
29		
30	102800	Toilet, Bath, and Laundry Accessories
31	104413	Fire Protection Cabinets
32	104416	Fire Extinguishers
33		
34	DIVISION 12 – FURNISHINGS	
35		
36	123200	Manufactured Wood Casework
37		
38	DIVISION 13 – SPECIAL CONSTRUCTION	
39		
40	133419	Metal Building Systems <i>(Issued via Addendum D1)</i>
41		

1 **VOLUME 2 of 2**

2

3 CERTIFICATION PAGE

4

5 TABLE OF CONTENTS

6

7 **DIVISION 21 – FIRE SUPPRESSION**

8

9 210500 Common Work Results for Fire Suppression

10 210517 Sleeves and Sleeve Seals for Fire-Suppression Piping

11 210518 Escutcheons for Fire-Suppression Piping

12 210523 General-Duty Valves for Fire Suppression Piping

13 210529 Hangers and Supports for Fire Suppression Piping and Equipment

14 210553 Identification for Fire-Suppression Piping and Equipment

15 211119 Fire Department Connections

16 211313 Wet-Pipe Sprinkler Systems

17 211316 Dry-Pipe Sprinkler Systems

18

19 **DIVISION 22 – PLUMBING**

20

21 220500 Common Work Results for Plumbing

22 220519 Meters and Gages for Plumbing Piping

23 220523.12 Ball Valves for Plumbing Piping

24 220523.13 Butterfly Valves for Plumbing Piping

25 220523.14 Check Valves for Plumbing Piping

26 220523.15 Gate Valves for Plumbing Piping

27 220529 Hangers and Supports for Plumbing Piping And Equipment

28 220553 Identification for Plumbing Piping and Equipment

29 220719 Plumbing Piping Insulation

30 221116 Domestic Water Piping

31 221119 Domestic Water Piping Specialties

32 221316 Sanitary Waste and Vent Piping

33 221319 Sanitary Waste Piping Specialties

34 221319.13 Sanitary Drains

35 223300 Electric, Domestic-Water Heaters

36 224000 Plumbing Fixtures

37 224213.13 Commercial Water Closets

38 224216.13 Commercial Lavatories

39 224500 Emergency Plumbing Fixtures

40 224716 Pressure Water Coolers

41

42 **DIVISION 23 – HEATING, VENTILATING AND AIR CONDITIONING**

43

44 230500 Common Work Results for HVAC

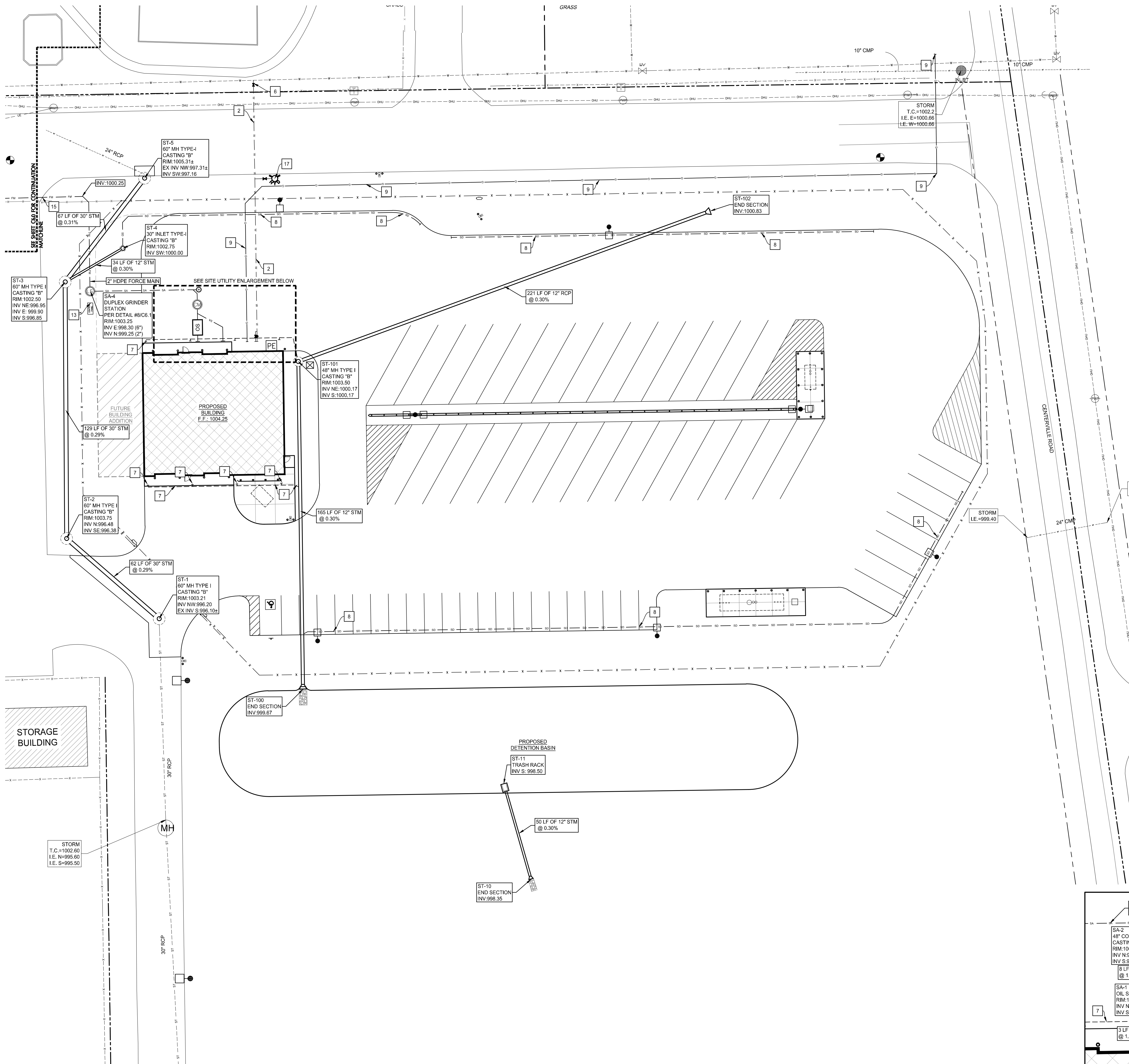
45 230513 Common Motor Requirements for HVAC Equipment

46 230529 Hangers and Supports for HVAC Piping and Equipment

1	230553	Identification for HVAC Piping and Equipment
2	230593	Testing, Adjusting, and Balancing for HVAC
3	230713	Duct Insulation
4	230719	HVAC Piping Insulation
5	231123	Facility Natural-Gas Piping
6	232300	Refrigerant Piping
7	233113	Metal Ducts
8	233300	Air Duct Accessories
9	233346	Flexible Ducts
10	233411	Fixed Louvers
11	233423	HVAC Power Ventilators
12	233439	High-Volume, Low Speed Fans
13	233713	Diffusers, Registers, and Grilles
14	235100	Breechings, Chimneys, and Stacks
15	235400	Furnaces
16	235523.13	Low-Intensity, Gas-Fired, Radiant Heaters
17	235533.16	Gas-Fired Unit Heaters
18	236313	Air-Cooled Refrigerant Condensers
19	238126	Split-System Air-Conditioner
20	238239.19	Wall and Ceiling Hung Heaters
21		
22		DIVISION 26 – ELECTRICAL
23		
24	260500	Common Work Results for Electrical
25	260519	Low-Voltage Electrical Power Conductors and Cables
26	260526	Grounding and Bonding for Electrical Systems
27	260533	Raceway and Boxes for Electrical Systems
28	260553	Identification for Electrical Systems
29	260923	Lighting Control Devices
30	262416	Panelboards
31	262726	Wiring Devices
32	262813	Fuses
33	262816	Enclosed Switches and Circuit Breakers
34	265100	Interior Lighting
35	265600	Exterior Lighting
36		
37		DIVISION 28 – ELECTRONIC SAFETY AND SECURITY
38		
39	283111	Fire Alarm System
40		
41		DIVISION 31 – EARTHWORK
42		
43	310000	Control of Site Work
44	311000	Site Demolition
45	312000	Site Earthwork
46	313000	Soil Erosion and Sediment Control

1	DIVISION 32 – EXTERIOR IMPROVEMENTS
2	
3	321216 Bituminous Concrete Pavement
4	321313 Portland Cement Concrete Pavement
5	323113 Chain Link Fence and Gates
6	329200 Lawns and Grasses
7	
8	DIVISION 33 – UTILITIES
9	
10	330500 Site Utility Piping
11	331116 Site Water Distribution
12	333114 Sanitary Sewer System
13	334100 Storm Drainage System
14	
15	DIVISION 41 – MATERIAL PROCESSING AND HANDLING EQUIPMENT
16	
17	412200 Cranes and Hoists <i>(Issued Via Addendum D1)</i>
18	
19	
20	
21	END OF TABLE OF CONTENTS

March 24, 2022 2:33 PM
 S:\Projects\Projects (5000-5999)\Projects (5450-5499)\Centerville Bus Garage Site\Drawings\Plans\5481-C4.0 Site Utility Plan.dwg



1 Site Utility Plan
 1" = 20'-0"

PROPOSED LEGEND:

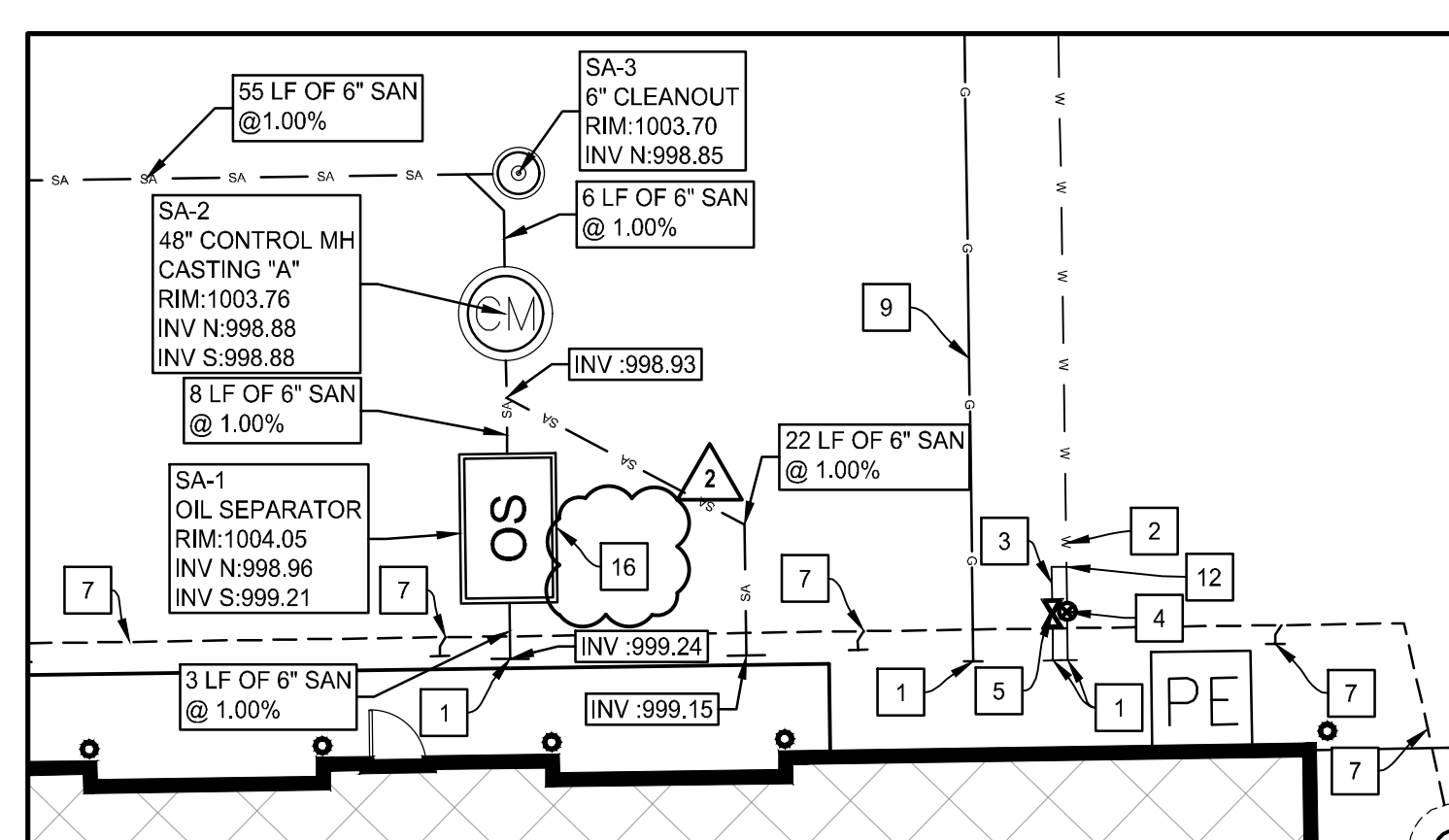
	STORM INLET / MANHOLE		STORM SEWER
	SANITARY CLEANOUT		SANITARY SEWER
	CONTROL MANHOLE		GAS LINE
	LIFT STATION		WATER LINE
	OIL SEPARATOR		FORCE MAIN
	GATE VALVE		GAS LINE
	PIV		SUBDRAIN

NOTE: PIPE LENGTHS ARE MEASURED TO THE CENTER OF STRUCTURES AND THE END OF END SECTIONS/TRASH RACKS UNLESS OTHERWISE NOTED.
 NOTE: ADJUST ALL EXISTING MANHOLES, VALVES, HYDRANTS AND HANDHOLES TO PROPOSED GRADES.
 NOTE: CONTRACTOR SHALL PROVIDE TRAFFIC CONTROL AS REQUIRED BY STATE AND LOCAL AUTHORITIES.

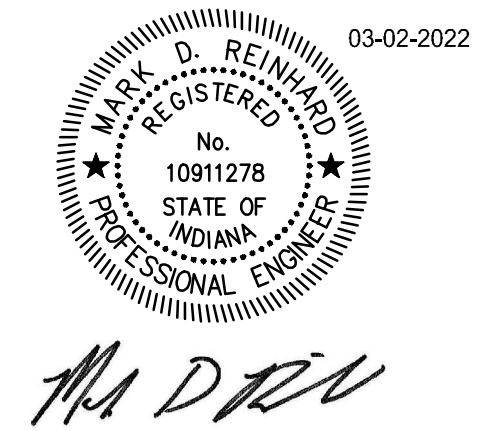
- UTILITY NOTES:**
- COORDINATE CONNECTION WITH THE BUILDING DRAWINGS.
 - 6" WATER LINE
 - 4" WATER LINE
 - 6" GATE VALVE, VALVE BOX, AND POST INDICATOR WITH STATUS SWITCH. SEE FIRE PROTECTION FOR CONNECTION TO CONTROL SYSTEM.
 - 4" GATE VALVE AND VALVE BOX
 - WATER CONNECTION, 6" X 6" TAPPING SLEEVE, VALVE & VALVE BOX.
 - DOWNSPOUT DRAIN @ MINIMUM 1.00%, CONNECT TO DOWNSPOUTS AS REQUIRED. MAINTAIN 3" MINIMUM COVER. SEE BUILDING PLANS.
 - 4" SUBDRAIN @ MIN. 2.0% PER DETAIL #7/C7.1.
 - FOR REFERENCE ONLY: GAS (BY UTILITY COMPANY)
 - TYPE "1" FIRE HYDRANT ASSEMBLY PER DETAIL #3/C7.1
 - FIELD VERIFY DEPTH AND LOCATION OF EXISTING UTILITY. NOTIFY ENGINEER AND WAIT FOR INSTRUCTION IF CONFLICTS WITH PROPOSED CONSTRUCTION.
 - 6"x4" TEE
 - INSTALL STAHLIN ENCLOSURES CONTROL PANEL MODEL #: "RJ1818HPL" OR APPROVED EQUAL. MOUNT CONTROL PANEL ON MOUNTING SYSTEM PER DETAIL ON ELECTRICAL PLAN. CONNECT SPECIFIED CONTROL PANEL TO DUPLEX GRINDER STATION PER MANUFACTURER'S RECOMMENDATIONS. COORDINATE WITH SITE ELECTRIC PLANS.
 - CORE HOLE IN EXISTING MANHOLE FOR PROPOSED SANITARY CONNECTION. PROVIDE WATER TIGHT CONNECTION.
 - 2" FORCE MAIN TO BE DIRECTIONALLY DRILLED BELOW ASPHALT.
 - OIL INTERCEPTOR PER DETAIL #9/C7.1.

- STORM SEWER NOTES:**
- MATERIAL AND WORKMANSHIP SHALL COMPLY WITH THE TOWN OF CENTERVILLE STANDARDS AND SPECIFICATIONS.
 - ALL PIPE 12" AND SMALLER SHALL BE SDR 35 PVC. OR ADS N-12 HDPE UNLESS OTHERWISE NOTED. ALL PIPE LARGER THAN 12" SHALL BE ADS N-12 HDPE OR C76 CL-111 RCP UNLESS OTHERWISE NOTED. ALL PIPE SHALL BE INSTALLED ACCORDING TO SPECIFICATIONS AND PIPE TRENCH DETAIL #1/C7.1.
 - MAINTAIN 10'-0" MINIMUM HORIZONTAL AND 18" MINIMUM VERTICAL SEPARATION BETWEEN ALL SEWER PIPING AND POTABLE WATER PIPING. WHEN MINIMUM TOLERANCES CAN'T BE MAINTAINED, USE WATERWORKS GRADE PIPE AND FITTINGS OF MATERIAL SELECTED.
 - COORDINATE TAP LOCATIONS FOR DOWNSPOUTS WITH BUILDING DRAWINGS. ASSURE ALL REQUIRED FITTINGS ARE INSTALLED ON THE MAIN LINE PRIOR TO BACKFILLING. INCLUDE ADAPTER FITTING FOR DOWNSPOUTS.
 - ALL UNDERGROUND PIPING FOR DOWNSPOUT COLLECTION SYSTEM SHALL BE 6" SDR 35 PVC STORM @ 1.00% MIN. SLOPE UNLESS NOTED OTHERWISE.

NOTE:
 NOT ALL KEYNOTES ARE USED ON THIS SHEET.



2 Site Utility Enlargement
 1" = 10'-0"



**CENTERVILLE-ABINGTON COMMUNITY SCHOOLS
 TRANSPORTATION BUILDING**

A PROJECT FOR:



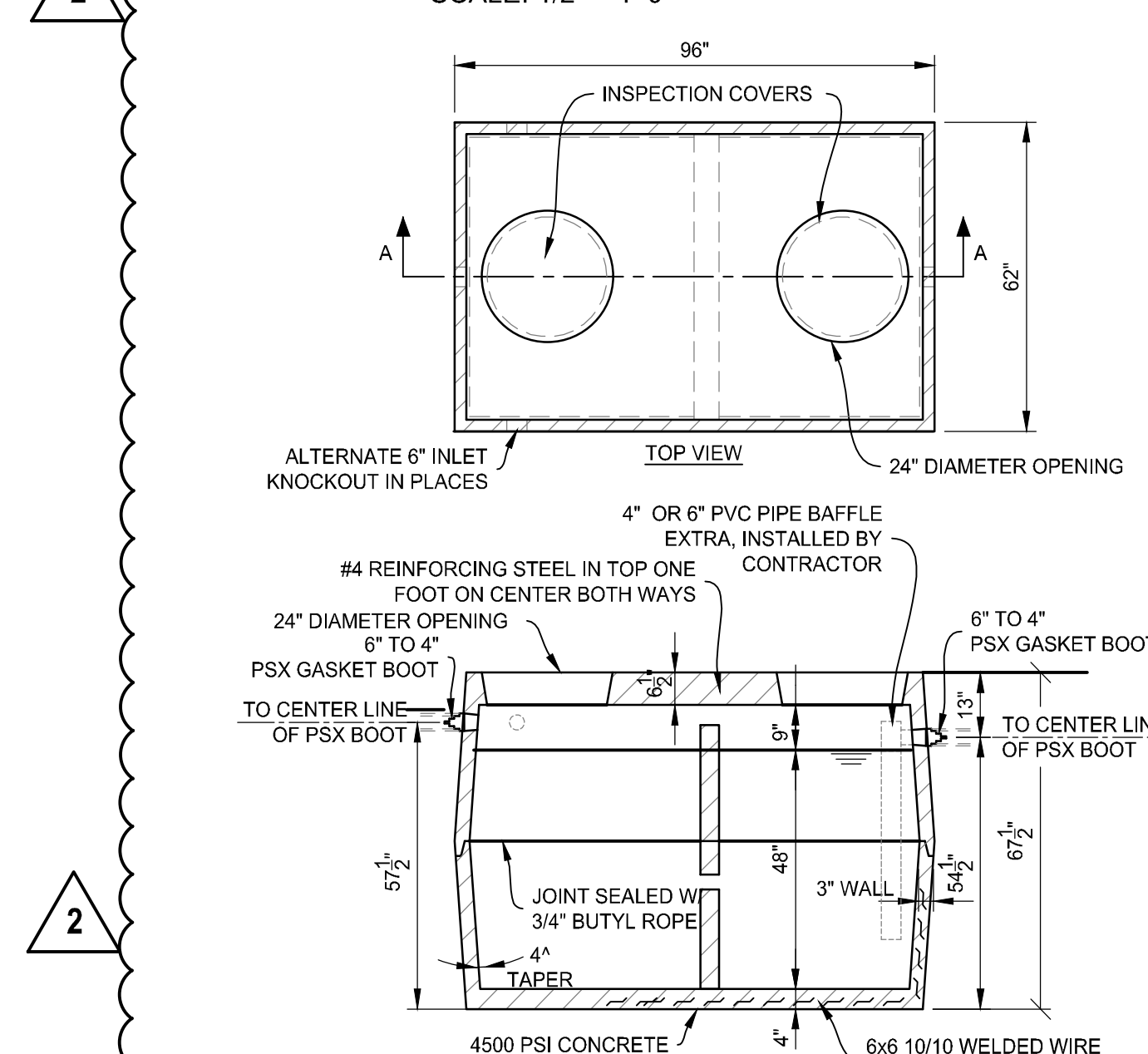
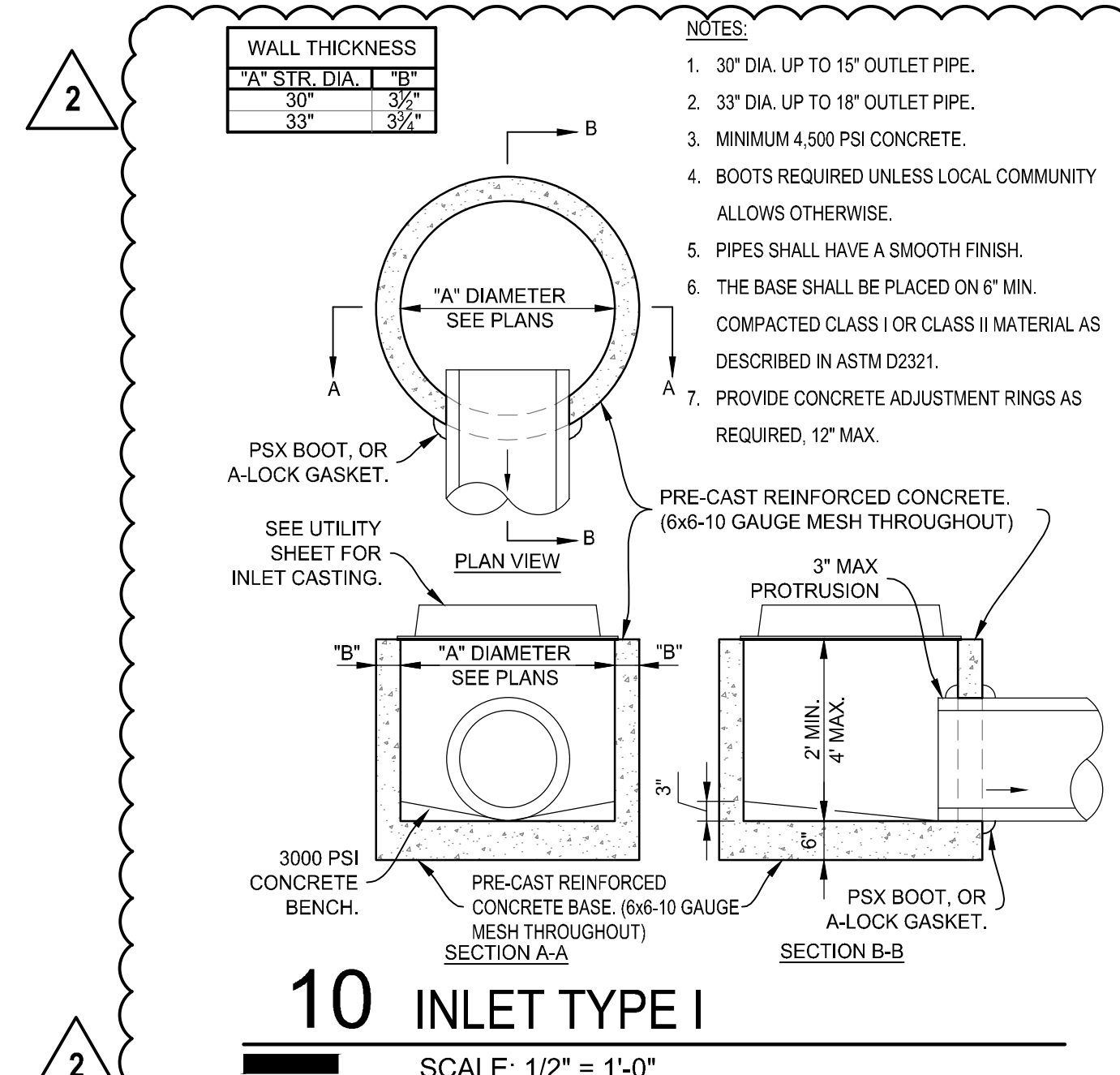
The drawings, notes, items, and details shown on this document are the sole property of Moake Park Group, Inc. and when created, developed, and prepared for the use on this specific project. None of the contents, ideas, designs, plans and details shall be used for any project, firm, or organization for any purpose whatsoever without express written consent of Moake Park Group, Inc. The Owner and its authorized representatives shall be responsible for all information and data provided to the contractor.

mark	date	description
△	03/21/22	Addendum 2
△	03/25/22	Addendum 3

Site Utility Plan

date: March 2, 2022
 project: 473003
 coordinator: DLR
 drawn: CMF
 checked: MDR
C4.0

March 24, 2022 2:33 PM
 S:\Projects\Projects (5000-5999)\Projects (5450-5499)\Centerville Bus Garage Site\Drawings\Plans\5481-C7.0 Site Details.dwg

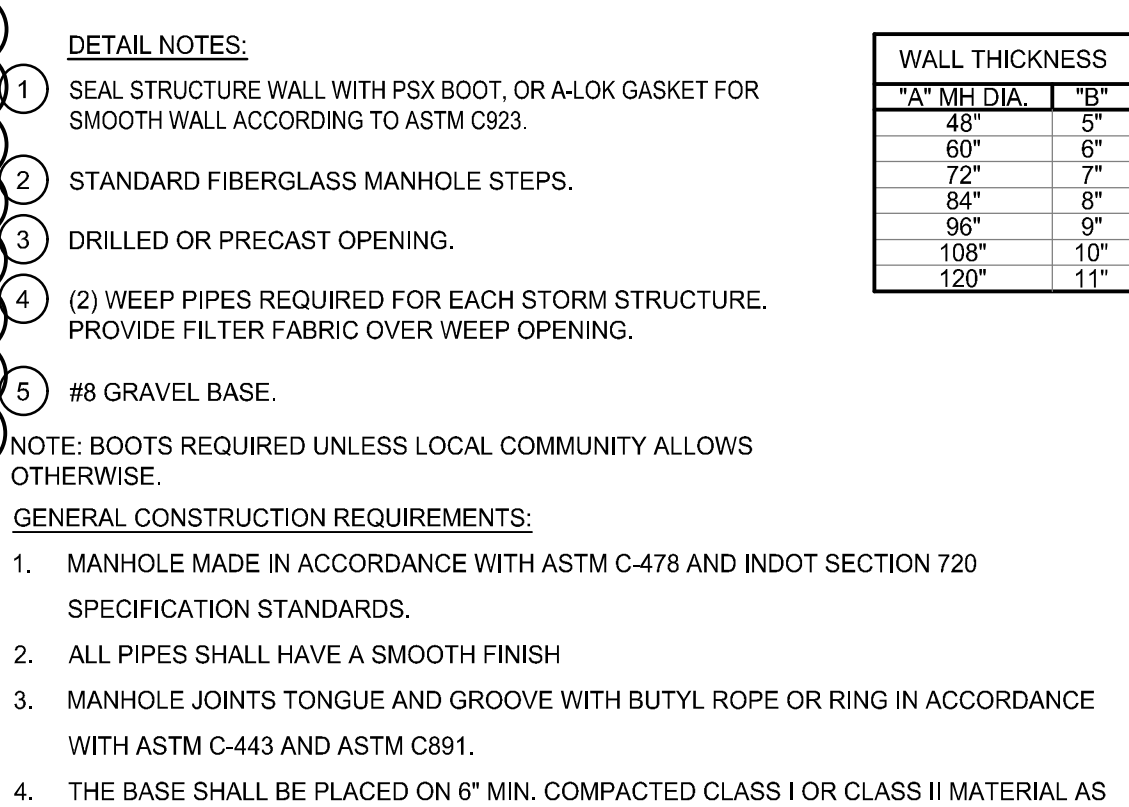
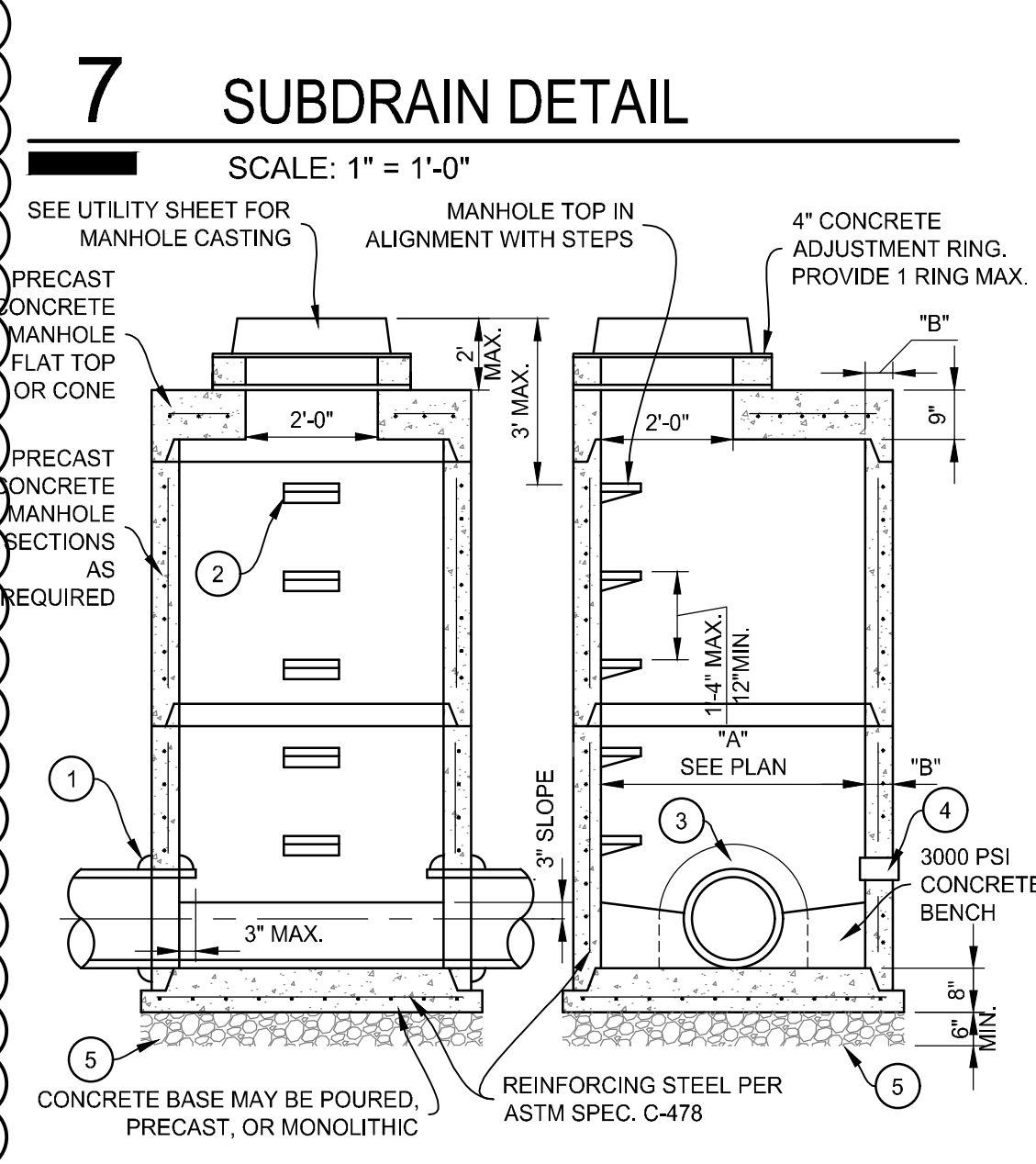
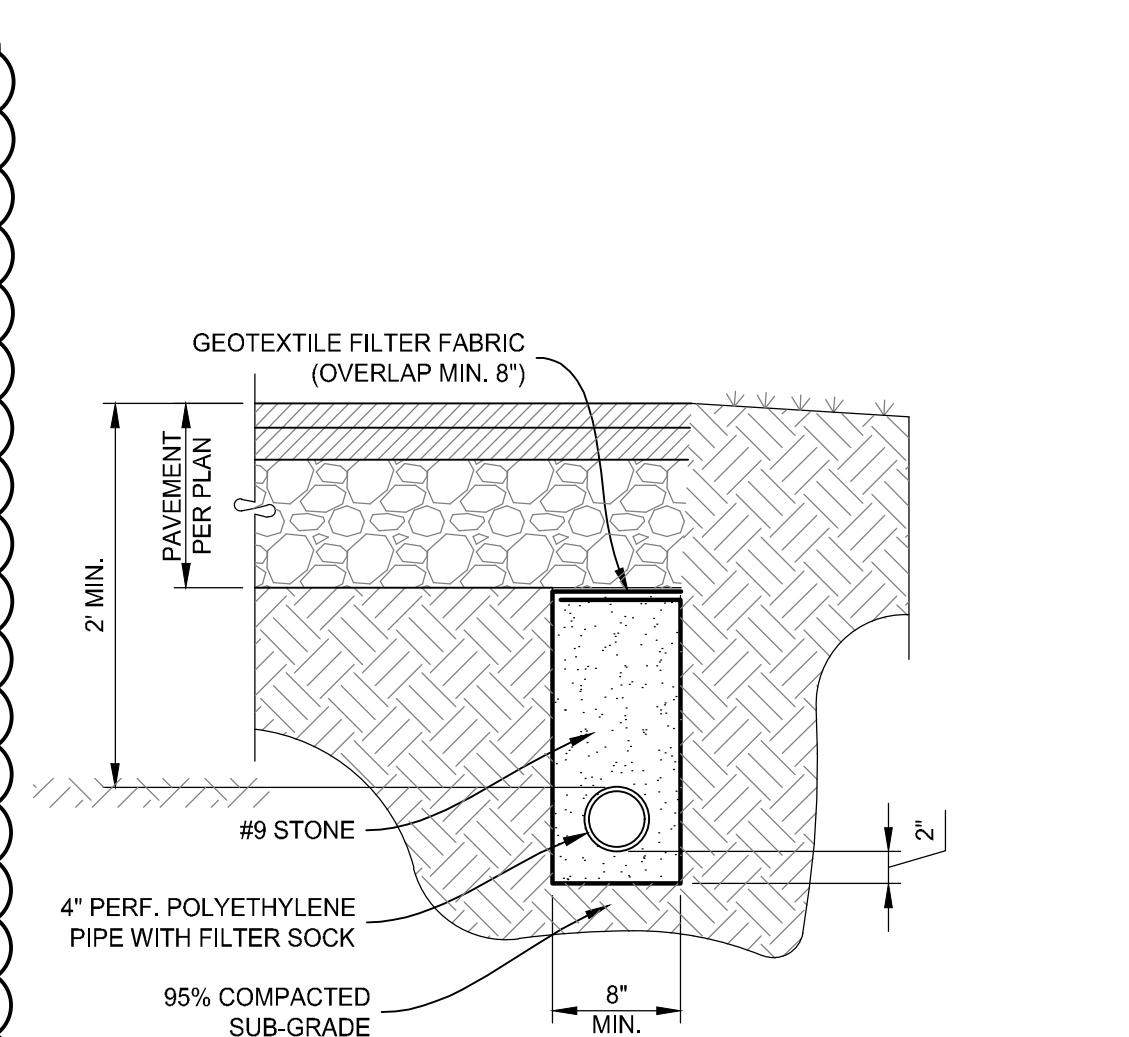
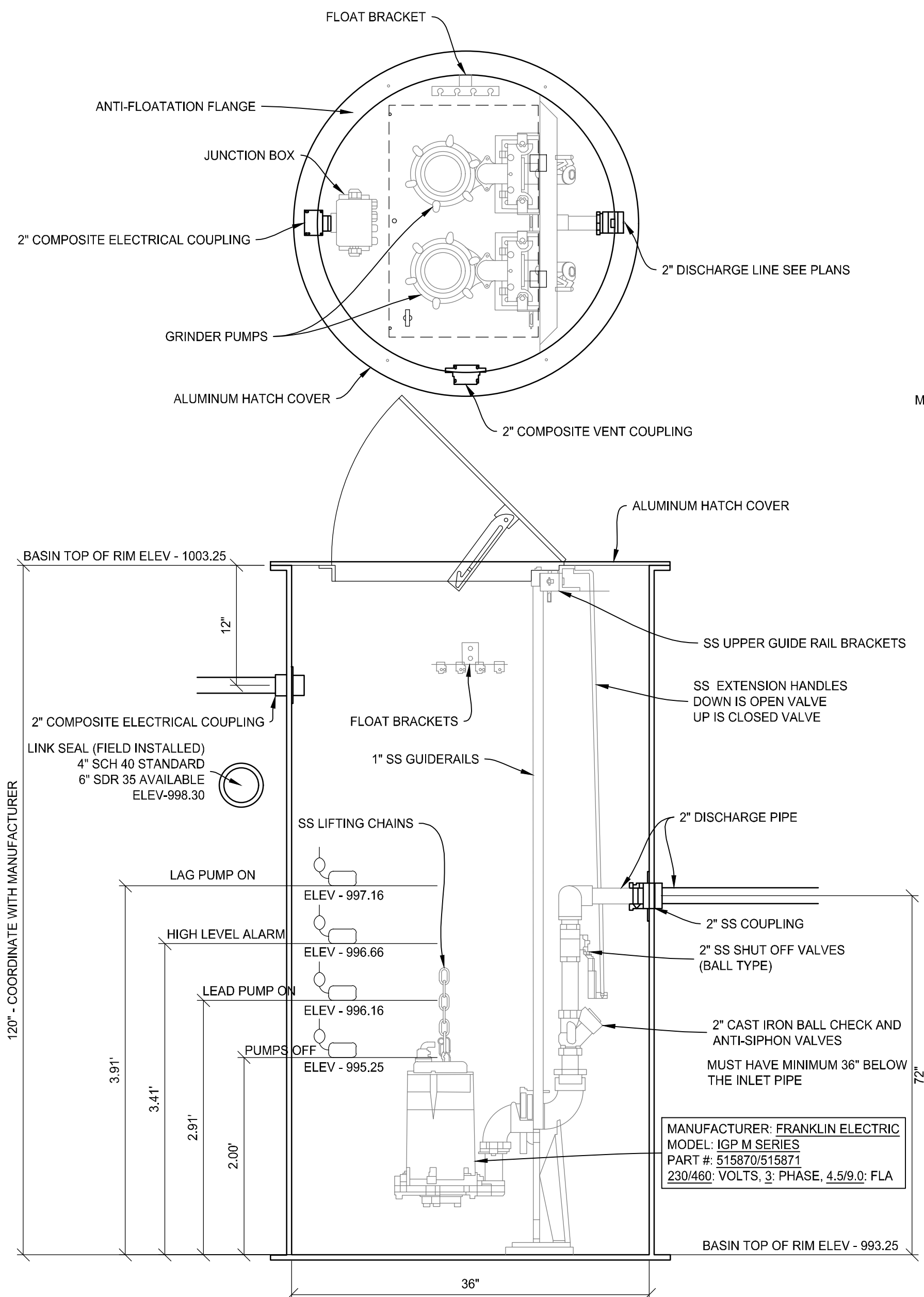


GRINDER STATION NOTES:

- THE SPECIFIC DESIGN DATA ARE AS FOLLOWS:
 - INSTALL (2) FRANKLIN ELECTRIC PUMPS, PART NO. 515870/515871, MODEL IGP-M SERIES, WITH 2HP, 230/460V/3PH OR APPROVED EQUAL.
- CONTACT WATERMARK ENGINEERED PRODUCT SALES, NATHAN SINDER, (317) 219-4333 OR NSINDER@WATERMARKENR.COM FOR INFORMATION.
- INSTALL LIFT OUT RAIL SYSTEMS, VALVES, CONTROLS, ACCESS CONVER(S) AND ALL OTHER APPURTENANCES TO MAKE A COMPLETE SYSTEM. LIFT OUT RAIL SYSTEM COMPONENTS AND UPPER GUIDE BRACKETS TO BE STAINLESS STEEL.
- INSTALL CHECK VALVES AND ISOLATION VALVES.
- PROVIDE BASIN COVER AND LOCKABLE ALUMINUM ACCESS HATCH.
- INSTALL ALL FLOATS, POWER CONNECTIONS AND MISCELLANEOUS FITTINGS WITHIN THE PUMP CHAMBER. FLOAT SWITCHES TO BE NON-MERCURY TYPE.
- PROVIDE STAINLESS STEEL LIFTING CHAINS & GUIDE RAILS FOR EACH PUMP.
- CONTROL PANEL TO INCLUDE: SEAL FAILURE DETECTION, PHASE DETECTION, VISUAL ALARM, AUDIO ALARM, ALTERNATE PUMPS & TIME CLOCK. PROVIDE MOUNTING PANEL AND INSTALL CONTROL PANEL ON MOUNTING PANEL. COORDINATE LOCATION OF MOUNTING PANEL WITH OWNER. CONTROL PANEL TO BE LOCKABLE.
- CONTRACTOR TO COORDINATE VOLTAGE SUPPLY WITH ELECTRICAL CONTRACTOR PRIOR TO CONSTRUCTION.
- PROVIDE SINGLE PHASE FUSIBLE DISCONNECT SIZED APPROPRIATELY FOR PUMPS AND CONTROLS INSIDE NEMA 3R ENCLOSURE.
- CONTRACTOR TO PROVIDE SHOP DRAWINGS FOR PUMPS, PRE-PACKAGED LIFT STATION, VALVES, FITTINGS, ETC. PRIOR TO CONSTRUCTION.

ALARM & FLOAT ELEVATIONS:

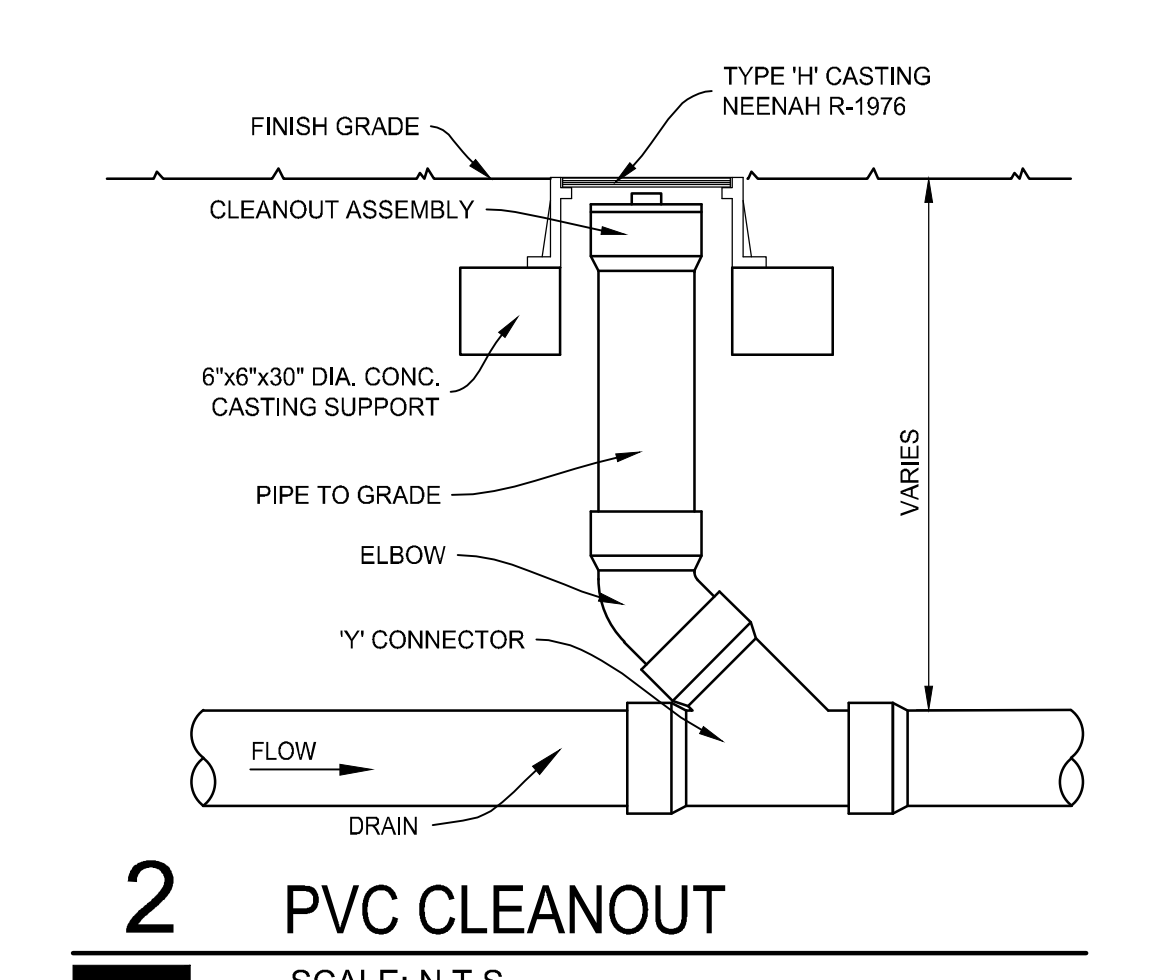
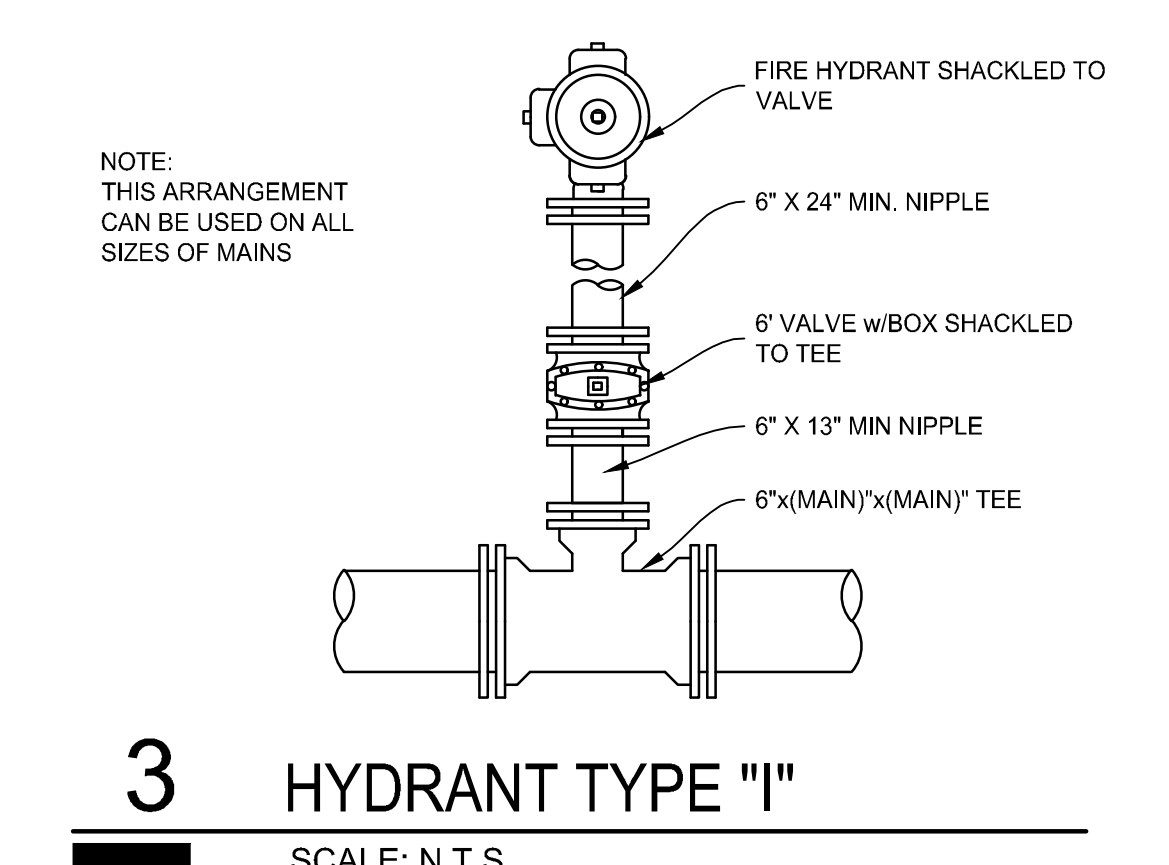
- (*) COORDINATE FLOAT ELEVATIONS WITH PUMP MANUFACTURER. VERIFY PUMP OFF ELEVATION IS SET SO THAT PUMPS ARE SUBMERGED AT ALL TIMES.



CASTING TYPE	CATALOG NUMBER	DESCRIPTION	PLAN VIEW	SECTION VIEW
A	LID & FRAME: 1772	LID: 1020AHGS FRAME: 1022Z1	SOLID W/ "SANITARY SEWER" LETTERING	
B	LID: 2502 FRAME: 1772	LID: 1022-M1 FRAME: 1022	OPEN W/ FISH LOGO	

NOTES:
 1. CASTINGS SPECIFIED, OR APPROVED EQUAL.
 2. ALL BEARING SURFACES TO BE MACHINED.
 3. COMPLY WITH ASTM A48-83 CLASS #35.
 4. WHEN USED WITH STORM INLET, CONTRACTOR TO VERIFY IF A SPECIAL ORDER CASTING IS NEEDED TO PROVIDE SUFFICIENT SUPPORT.

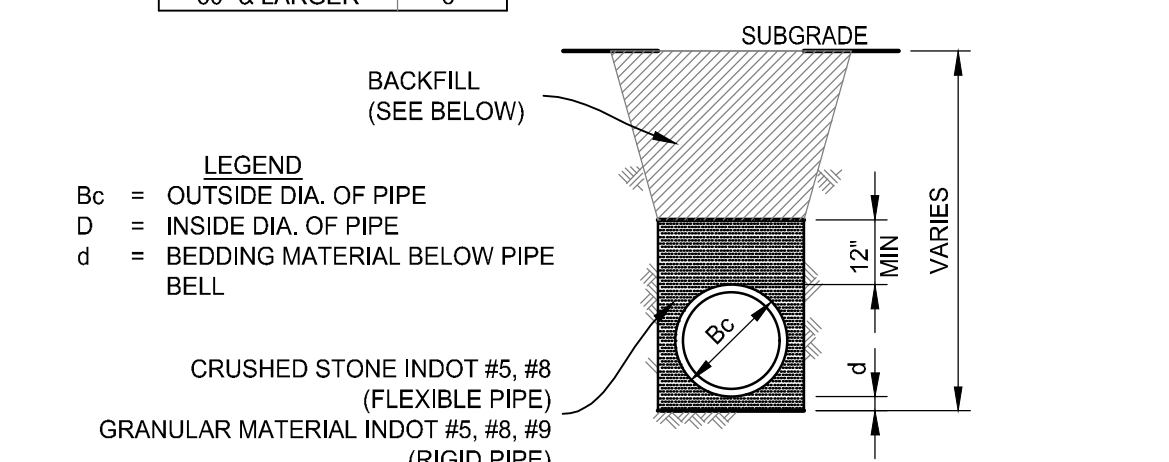
4 CASTING SCHEDULE
 SCALE: NONE



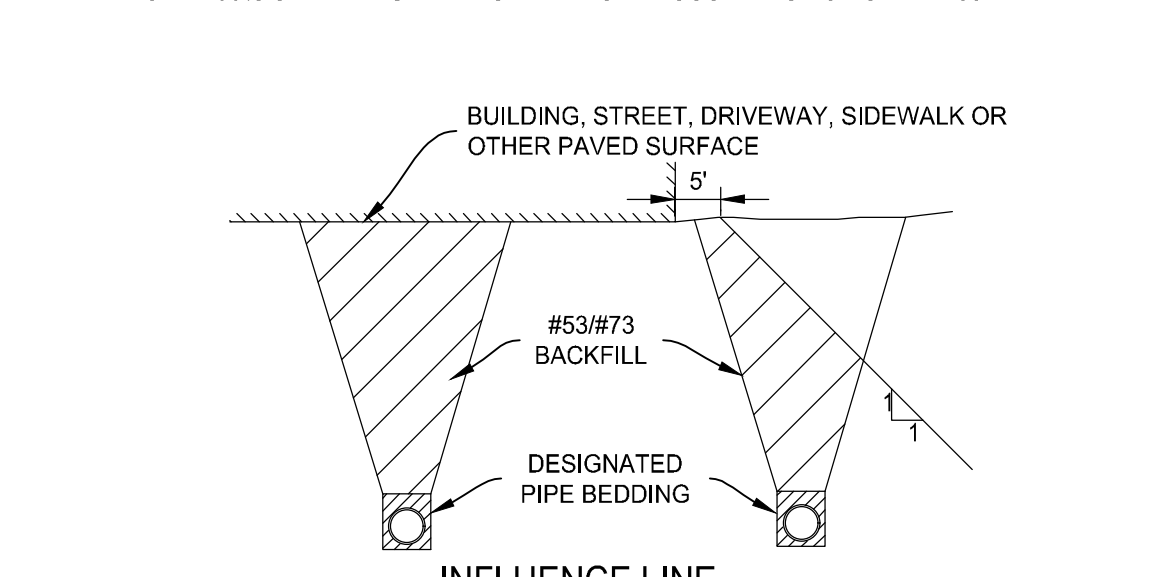
BEDDING SPECIFICATIONS

- FOR ROCK OR OTHER NON-COMPRESSIBLE MATERIAL, THE TRENCH SHALL BE OVER EXCAVATED A MINIMUM OF 6" AND REFILLED WITH BEDDING MATERIAL.
- DEPTH OF BEDDING MATERIAL BELOW PIPE:

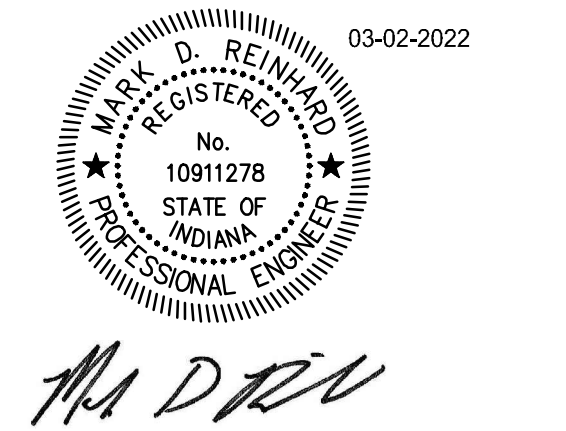
D	d (Min.)
LESS THAN 60"	4"
60" & LARGER	6"



- BACKFILL SPECIFICATIONS**
- BACKFILL WITHIN PUBLIC R.O.W., UNDER PAVED AREAS, AND WITHIN THE INFLUENCE OF BUILDING STRUCTURES SHALL BE INDOT #53/873. INFLUENCE ZONE SHALL EXTEND AT A 1:1 SLOPE FROM ABOVE ITEM. COMPACTION SHALL MEET OR EXCEED 95% OF MAXIMUM DRY UNIT WEIGHT ACCORDING TO ASTM D 1557.
 - BACKFILL WITHIN LAWN AREAS AND OUT OF THE INFLUENCE OF BUILDING STRUCTURES, PAVED AREAS, AND PUBLIC R.O.W., SHALL BE STANDARD BACKFILL. STANDARD BACKFILL SHALL BE FREE OF: ROCK AND GRAVEL LARGER THAN 3" IN ANY DIMENSION, DEBRIS, WASTE, FROZEN MATERIALS, VEGETATION, AND OTHER DELETERIOUS MATERIAL ACCORDING TO ASTM D 2487. COMPACTION SHALL MEET OR EXCEED 90% OF MAXIMUM DRY UNIT WEIGHT ACCORDING TO ASTM D 1557.



1 PIPE TRENCH DETAIL
 SCALE: NONE



CENTERVILLE-ABINGTON COMMUNITY SCHOOLS TRANSPORTATION BUILDING



A PROJECT FOR:

mark	date	description
△	03/21/22	Addendum 2
△	03/25/22	Addendum 3

Site Details

date:	March 2, 2022
project:	473003
coordinator:	DLR
drawn:	CMF
checked:	MDR