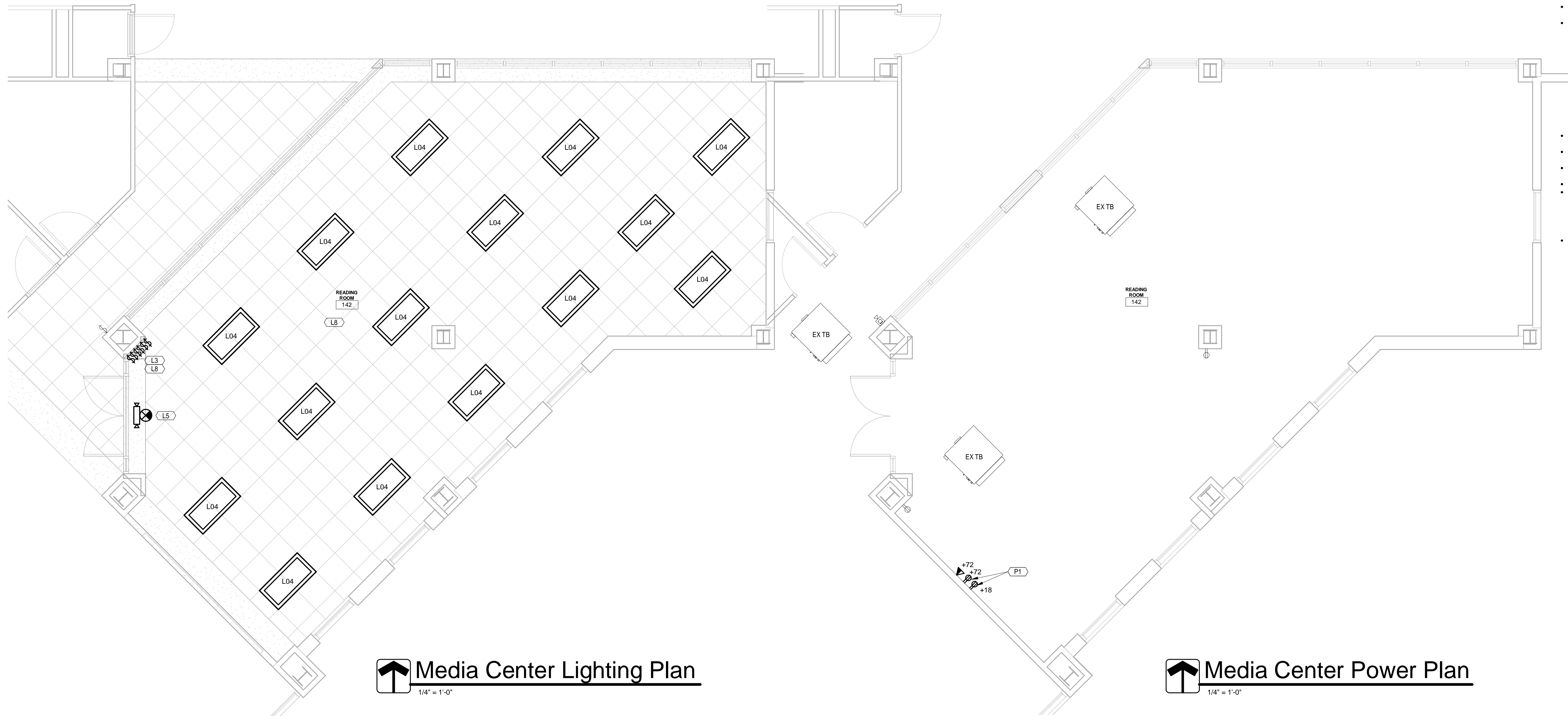


Luminaire Schedule								
Type	Mount	Fixture Description	Lamp Description	Input Wattage	Basis of Design	Approved Manufacturer 1	Approved Manufacturer 2	Approved Manufacturer 3
L01	RECESS	CONTRACTOR GRADE RECESSED LENSED TROFFER, 2'X4', GRID MOUNT, FLUSH STEEL DOOR, #12 PATTERN ACRYLIC LENS, 125" THICK, DIMMABLE	LED; 4300 LUMENS; 3500°K; 80CRI	31 VA	LITHONIA 2GTL-4-40L-EZ1-LP835	COLUMBIA	METALUX	
L02	RECESS	CONTRACTOR GRADE RECESSED LENSED TROFFER, 1'X4', GRID MOUNT, FLUSH STEEL DOOR, #12 PATTERN ACRYLIC LENS, 125" THICK, DIMMABLE	LED; 2000 LUMENS; 3500°K; 80CRI	20 VA	LITHONIA GTL-4-20L-EZ1-LP835	COLUMBIA	METALUX	
L03	WALL	THERMOPLASTIC EMERGENCY UNIT WITH ADJUSTABLE LAMPS; SELF-DIAGNOSTIC/SELF TEST	LED	3 VA	LITHONIA ELM2 LED SD	DUAL-LITE	SURE-LITES	
L04	RECESS	SPECIFICATION GRADE RECESSED LENSED TROFFER, 2'X4', GRID MOUNT, DIMMABLE	LED; 4000 LUMENS; 3500°K; 80CRI	39 VA	LITHONIA 2FSL4 40L EZ1-LP835	COLUMBIA	METALUX	

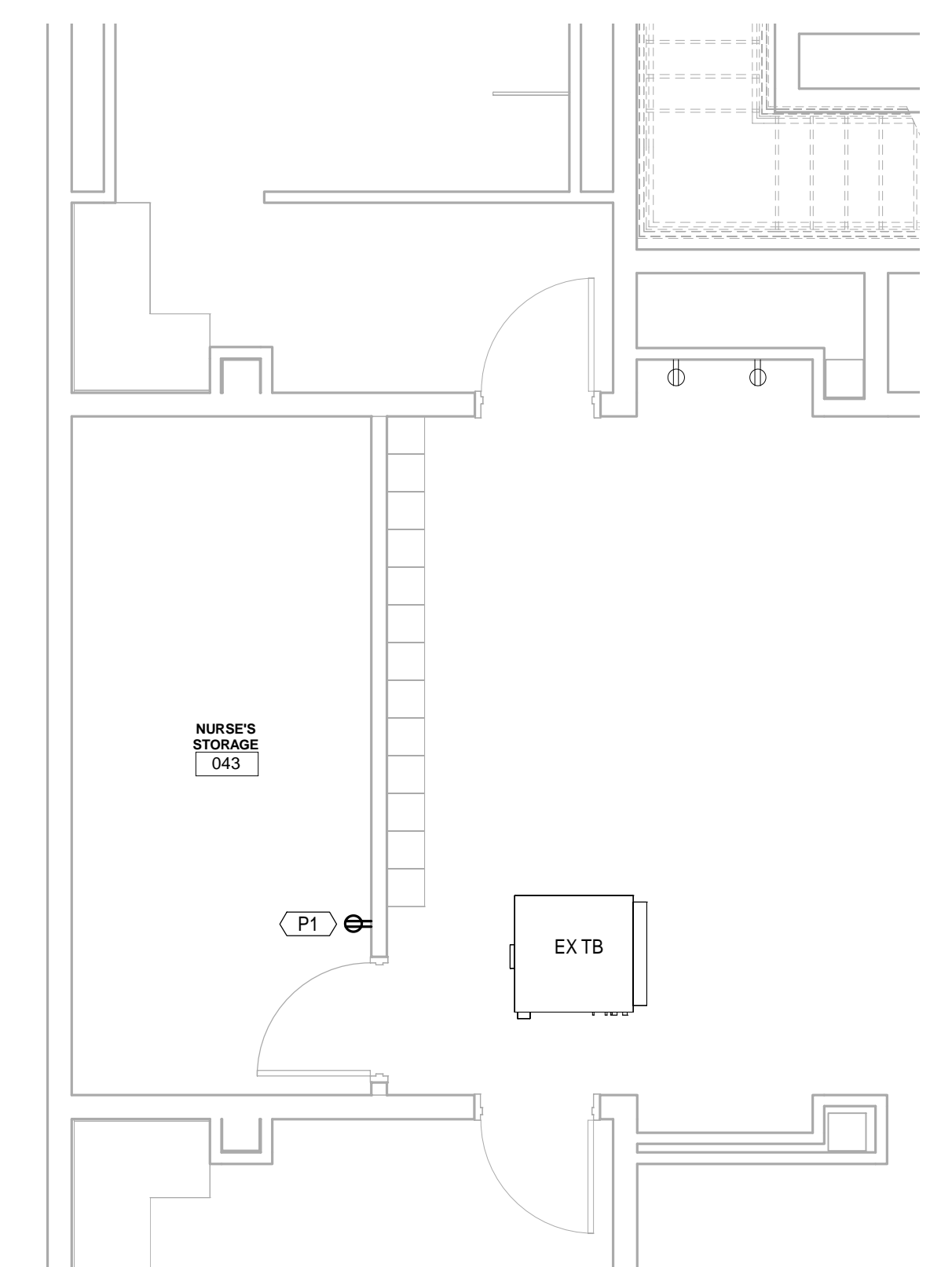
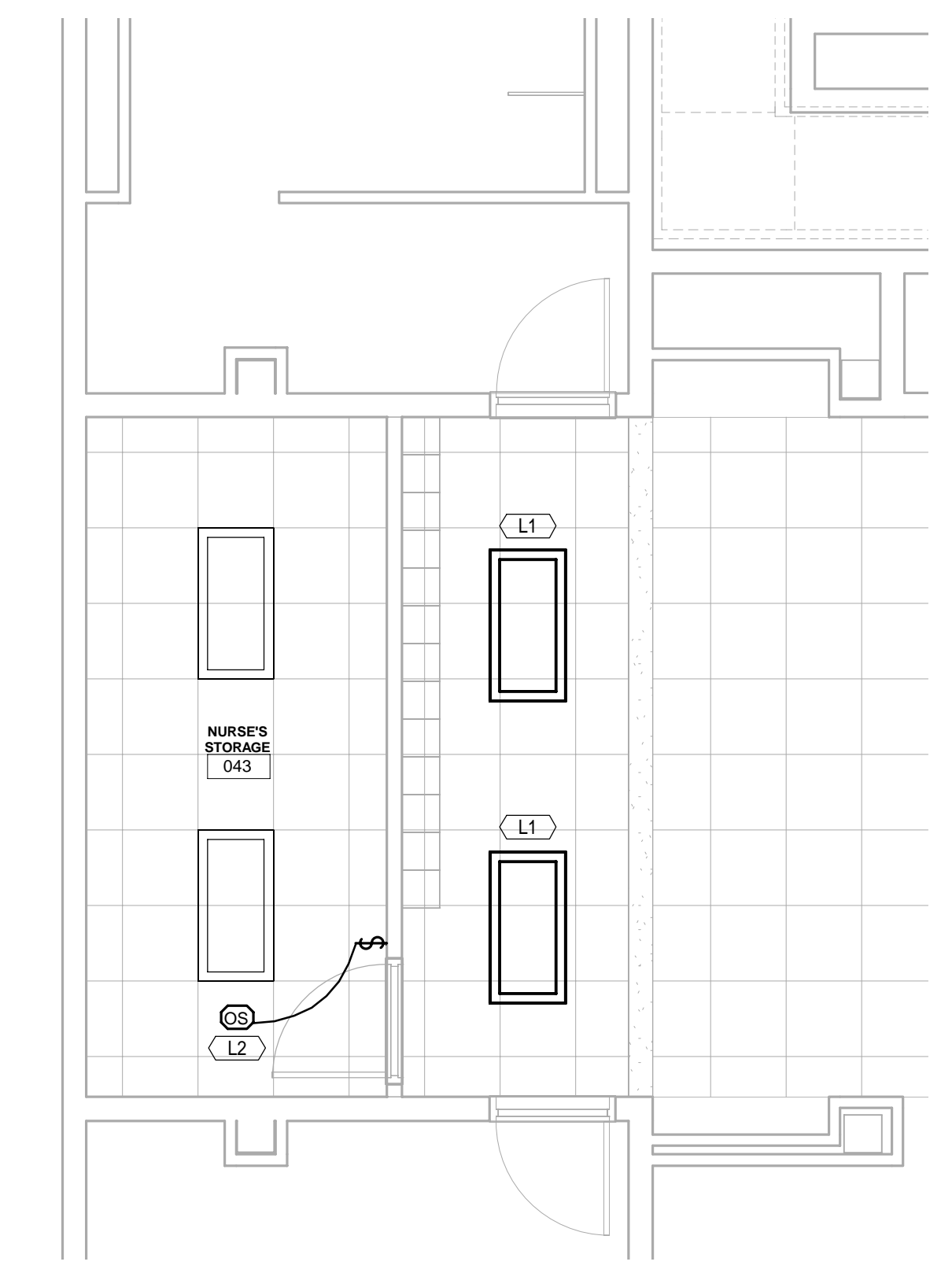
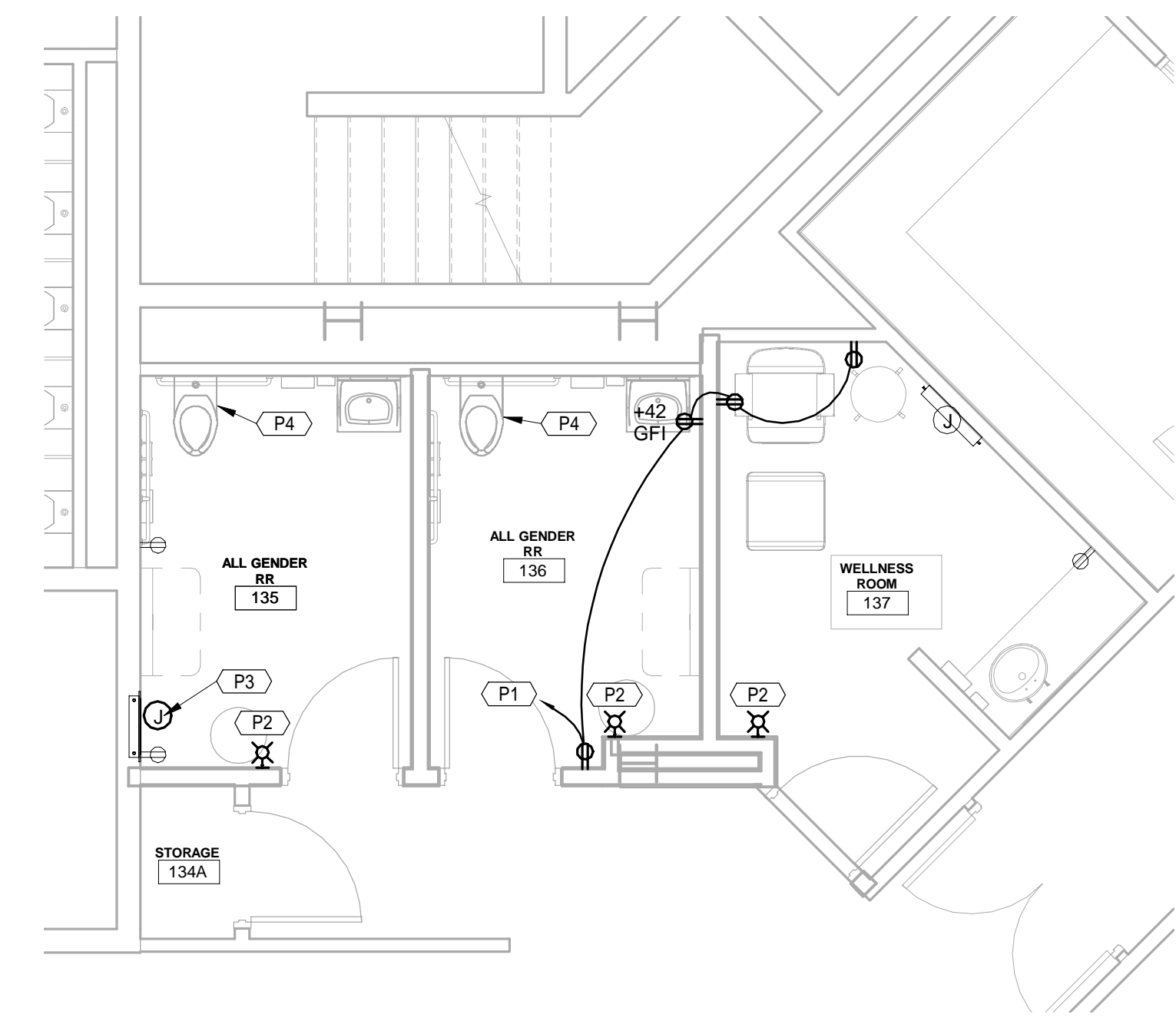
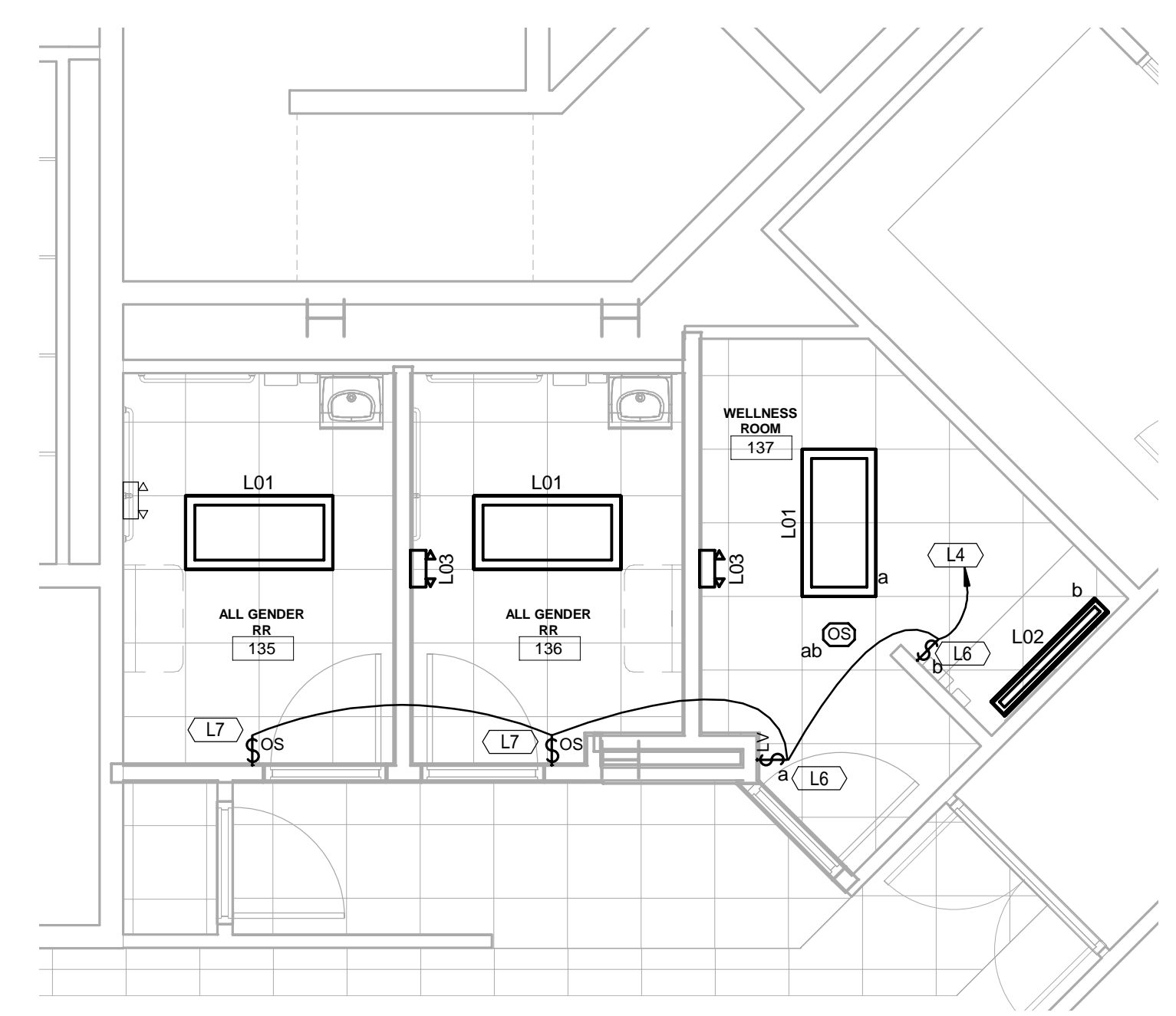
- ELECTRICAL SPECIFICATIONS - APPLY TO ALL ELECTRICAL SHEETS:**
- THE ELECTRICAL WORK INCLUDES THE LABOR AND MATERIAL TO COMPLETELY INSTALL THE ELECTRICAL WORK AS INDICATED.
 - THE ENTIRE INSTALLATION SHALL CONFORM TO THE NATIONAL ELECTRICAL CODE AND APPLICABLE STATE AND LOCAL CODES.
 - USE EMT OR RIGID CONDUIT OF 3/4" MINIMUM TRADE SIZE. USE PVC SCH 40 BELOW FLOOR SLAB AND EXTERIOR BELOW GRADE. EMT FITTINGS SHALL BE STEEL OF THE SET SCREW OR COMPRESSION TYPE (DIE CAST IS NOT ACCEPTABLE).
 - USE COPPER WIRE WITH TYPE THHN, THWN, OR XHHW INSULATION.
 - PROVIDE PRESSED STEEL BOXES, SINGLE PIECE (NON-GANGABLE TYPE).
 - USE COVER PLATES EQUAL TO P & S 040 INCH 18-8 STAINLESS STEEL.
 - RECEPTACLES SHALL MATCH EXISTING.
 - SWITCHES SHALL MATCH EXISTING.
 - COMMUNICATIONS OUTLETS SHALL CONSIST OF A 4" SQUARE BACKBOX WITH SINGLE GANG RING. PROVIDE 1 1/4" CONDUIT STUBBED TO ABOVE NEAREST ACCESSIBLE CEILING. PROVIDE COMMUNICATIONS WIRING PER SCHEDULE AND THESE SPECIFICATIONS (WHEN APPLICABLE), WHEN PROVIDING WIRING, PROVIDE BLANK COVER PLATES FOR OUTLETS NOT BEING USED.
 - USE LIGHTING FIXTURES AS SCHEDULED, UNLESS ALTERNATES APPROVED PRIOR TO BIDDING. FIXTURES INSTALLED IN GRID CEILING SHALL BE EQUIPPED WITH SAFETY CHAIN (FROM TWO CORNERS) CONNECTED TO STRUCTURAL MEMBER ABOVE THE CEILING.
 - LED DRIVERS SHALL BE STANDARD DIMMABLE TO 1%.
 - PANELBOARDS, MOTOR STARTERS, SAFETY SWITCHES (HEAVY DUTY), ETC. SHALL BE AS MANUFACTURED BY CUTLER HAMMER, GE, SIEMENS, OR SQUARE D. INCLUDE A TYPED CIRCUIT SCHEDULE IN EACH PANEL.
 - EQUIPMENT THAT IS TO BE MOUNTED ON MASONRY WALLS SHALL BE MOUNTED ON UNISTRUT AT LEAST 3/4" FROM WALL.
 - LABEL DEVICES AS FOLLOWS:
 - ALL PANELS SHALL BE IDENTIFIED WITH PANEL DESIGNATION ON OUTSIDE OF DOOR. LABEL SHALL BE ENGRAVED "LAMICOID" (1/16" THICK) WITH 1/2" LETTERS.
 - ALL MOTOR STARTERS, SAFETY SWITCHES, AND REMOTE PUSH BUTTON STATIONS SHALL BE MARKED WITH STARTER NUMBER, NAME AND NUMBER OF DEVICE CONTROLLED, AND CIRCUIT NUMBER. MARKINGS SHALL BE INSIDE DOOR AND DEVICE CONTROLLED SHALL BE OUTSIDE DOOR. LABEL SHALL BE "LAMICOID" (1/16" THICK) WITH 1/4" LETTERS AND PUSHBUTTONS (1/32" THICK).
 - ALL TIME CLOCKS AND LIGHTING CONTACTORS SHALL BE MARKED WITH "LAMICOID" (1/16" THICK) 1/4" LETTERS INDICATING DEVICES CONTROLLED.
 - ALL CONVENIENCE OUTLETS, LIGHT SWITCHES, AND JUNCTION BOXES ABOVE CEILING SHALL BE MARKED WITH NON-WASHABLE, INDELIBLE BLACK INK INSIDE THE COVER PLATE WITH CIRCUIT NUMBER.
 - MOUNT LIGHT SWITCHES AT +46" A.F.F. TO BOTTOM AND RECEPTACLES AT +16" A.F.F. TO BOTTOM UNLESS OTHERWISE NOTED.
 - EXIT LIGHTS MATCH EXISTING. MATCH THE COLOR OF EXISTING UNITS WHERE APPLICABLE.
 - EMERGENCY BATTERY PACK UNITS SHALL BE LITHONIA #ELM2 LED FOR INTERIOR UNITS AND LITHONIA #VLTUMRGY FOR EXTERIOR UNITS OR APPROVED EQUAL.
 - SEE SEPARATE SECTION FOR FIRE ALARM SYSTEM REQUIREMENTS.
 - SUBMIT (5) SETS OF SHOP DRAWINGS AND OBTAIN ARCHITECT'S ENGINEER (A/E) RELEASE PRIOR TO ALLOWING PRODUCTS TO SHIP FROM THE MANUFACTURER. INCLUDE SUBMITTALS FOR:
 - FIRE ALARM SYSTEM AND DEVICES
 - LIGHT FIXTURES AND CONTROLS
 - PANEL BOARDS AND MOTOR CONTROLS
 - TO OBTAIN APPROVAL FOR PRODUCTS OF MANUFACTURERS NOT INCLUDED IN THESE DOCUMENTS, SUBMIT COMPLETE PRODUCTS DATA FOR A/E REVIEW AT LEAST (7) DAYS PRIOR TO BID DATE. WHEN REQUESTED BY A/E, PROVIDE SAMPLE OF PROPOSED ITEM FOR EVALUATION.



Media Center Lighting Plan
1/4" = 1'-0"

Media Center Power Plan
1/4" = 1'-0"

Sheet Specific Plan Notes	
L1	CONNECT EXISTING FIXTURE TO EXISTING LIGHTING CIRCUIT.
L2	BREAKER EXISTING CIRCUIT TO THESE TWO EXISTING FIXTURES. PROVIDE NEW CEILING MOUNTED OCCUPANCY SENSOR AND INSTALL UP STREAM OF EXISTING FIXTURE AND NEW LIGHT SWITCH. RECONNECT TO EXISTING CIRCUIT BUT UPSTREAM OF ALL SWITCHES. CIRCUIT TO EXISTING FIXTURES SHALL BE UNSWITCHED PRIOR TO CONNECT TO EXISTING FIXTURES.
L3	BASE BID: RELOCATE EXISTING SWITCHES, RECONNECT TO EXISTING CIRCUITS AND EXTEND CIRCUITS AS REQUIRED. ALTERNATE BID #P1. PROVIDE NEW LOW VOLTAGE SWITCH Night #nPDM-DX
L4	CONNECT TO EXISTING LIGHTING CIRCUIT.
L5	NEW EXIT/EMERGENCY COMBO UNIT. MATCH EXITING IN BUILDING. CONNECT TO UNSWITCHED SIDE OF ROOM'S LIGHTING CIRCUIT.
L6	LOW VOLTAGE SWITCH SHALL BE ON/OFF/RAISE/LOWER. EQUAL TO NLIGHT #nPDM-DX
L7	LOW VOLTAGE SWITCH SHALL BE OCCUPANCY SENSOR WITH ON/OFF/RAISE/LOWER. EQUAL TO NLIGHT #NWEX DOT LV DX
L8	BASE BID: NO WORK OTHER THEN ADDING NEW COMBINATION EXIT AND EMERGENCY LIGHT. ALTERNATE BID #P1. PROVIDE AND INSTALL LOW FIXTURES. NEW LOW VOLTAGE SWITCH AND MOTION SENSORS. CONNECT NEW FIXTURES TO EXISTING LIGHTING CIRCUITS IN ROOM. REMOVE SINGLE GANG SWITCHES THAT ARE NO LONGER NEEDED. PROVIDE BLANK COVER PLATE FOR OLD SWITCHES.
P1	PROVIDE NEW DUPLEX RECEPTACLE. CONNECT TO EXISTING 120V POWER CIRCUIT.
P2	PROVIDE NEW FIRE ALARM DEVICES AND CONNECT TO EXISTING FIRE ALARM SYSTEM. FIRE ALARM DEVICE SHALL MATCH EXISTING.
P3	RELOCATE CABINET HEATER. EXTEND CIRCUIT AS REQUIRED.
P4	PROVIDE 120V CONNECTION TO PLUMBER SUPPLIED TRANSFORMER FOR AUTO-FLUSH VALVES. MOUNT J-BOX ABOVE CEILING SO THAT THE TRANSFORMER CAN BE MOUNTED TO IT. COORDINATE WITH PLUMBER ON ELECTRICAL REQUIREMENTS AND LOCATIONS FOR TRANSFORMER. CONNECT TO ROOM'S EXISTING RECEPTACLE CIRCUIT



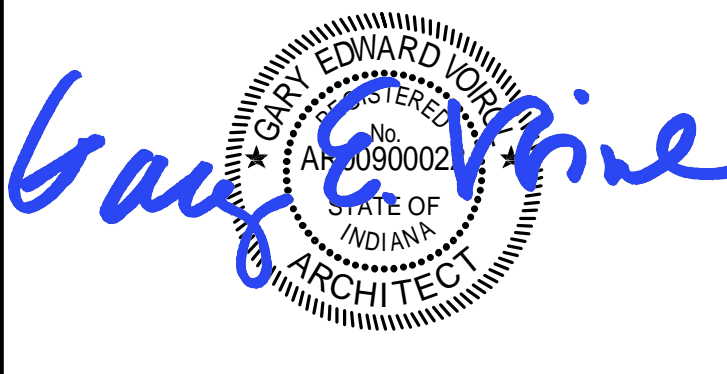
Wellness Area Lighting Plan
1/4" = 1'-0"

Wellness Area Power Plan
1/4" = 1'-0"

Nurse Storage Lighting Plan
1/4" = 1'-0"

Nurse Storage Power Plan
1/4" = 1'-0"

MSKTD & Associates
Architecture | Engineering | Interior Design
1715 Magnavox Way Fort Wayne, IN 46804 260.432.8537
930 North Meridian Indianapolis, IN 46204 317.917.1190
www.msktd.com



A Project for:
Indiana University East
Brice E. Hayes Hall
Renovations to Rooms 099, 135, 137, & 140
IU Project Number: 20165126

PROJECT NO. 7327	DATE 10-05-18
REV.	DATE

SET DESCRIPTION
Construction Set

SHEET TITLE
Electrical Plans

SHEET NUMBER
E2-1